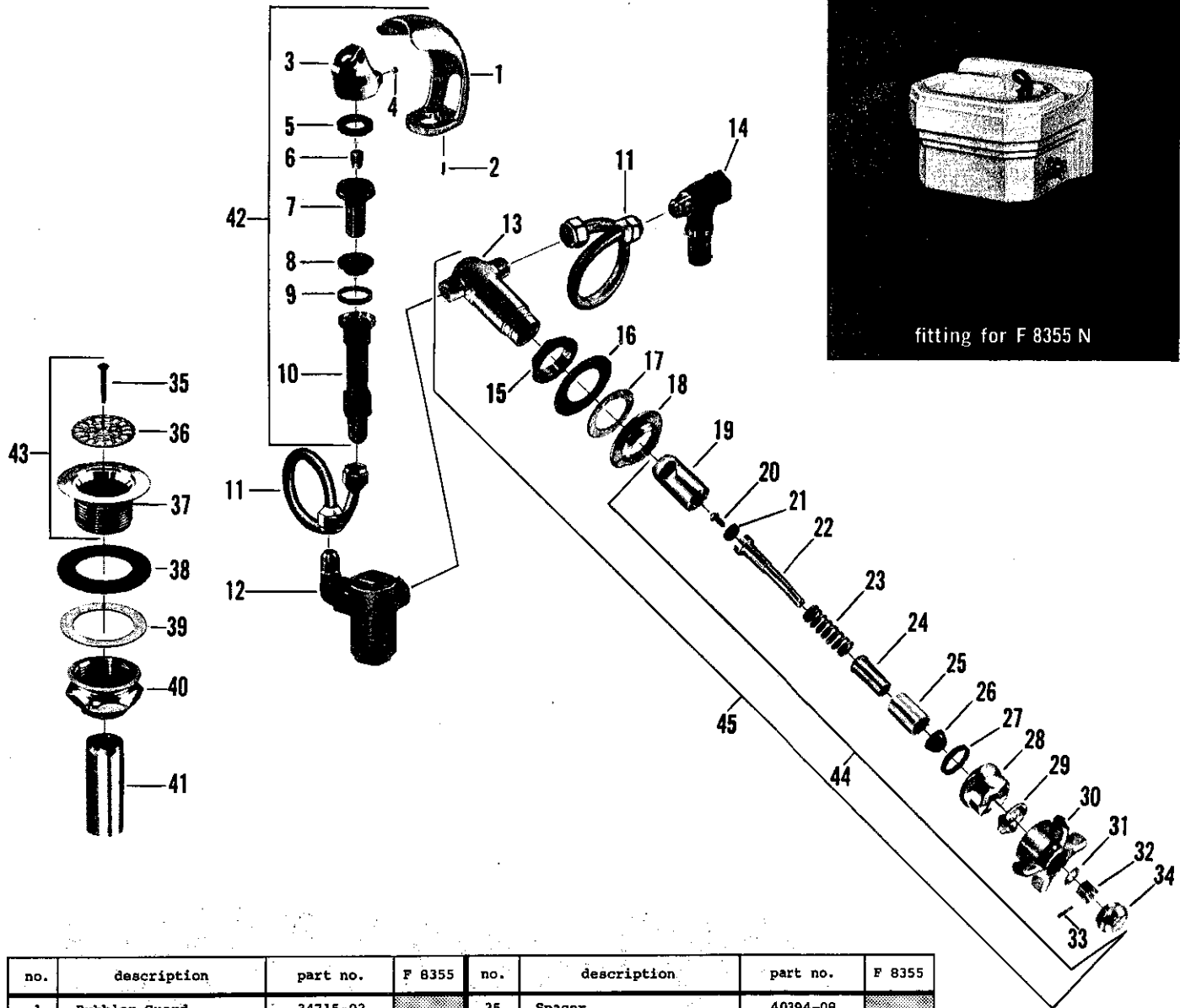


Drinking fountain fittings

Drinking Fountain Fitting

for Neo-toric

KISSLER & CO., INC.

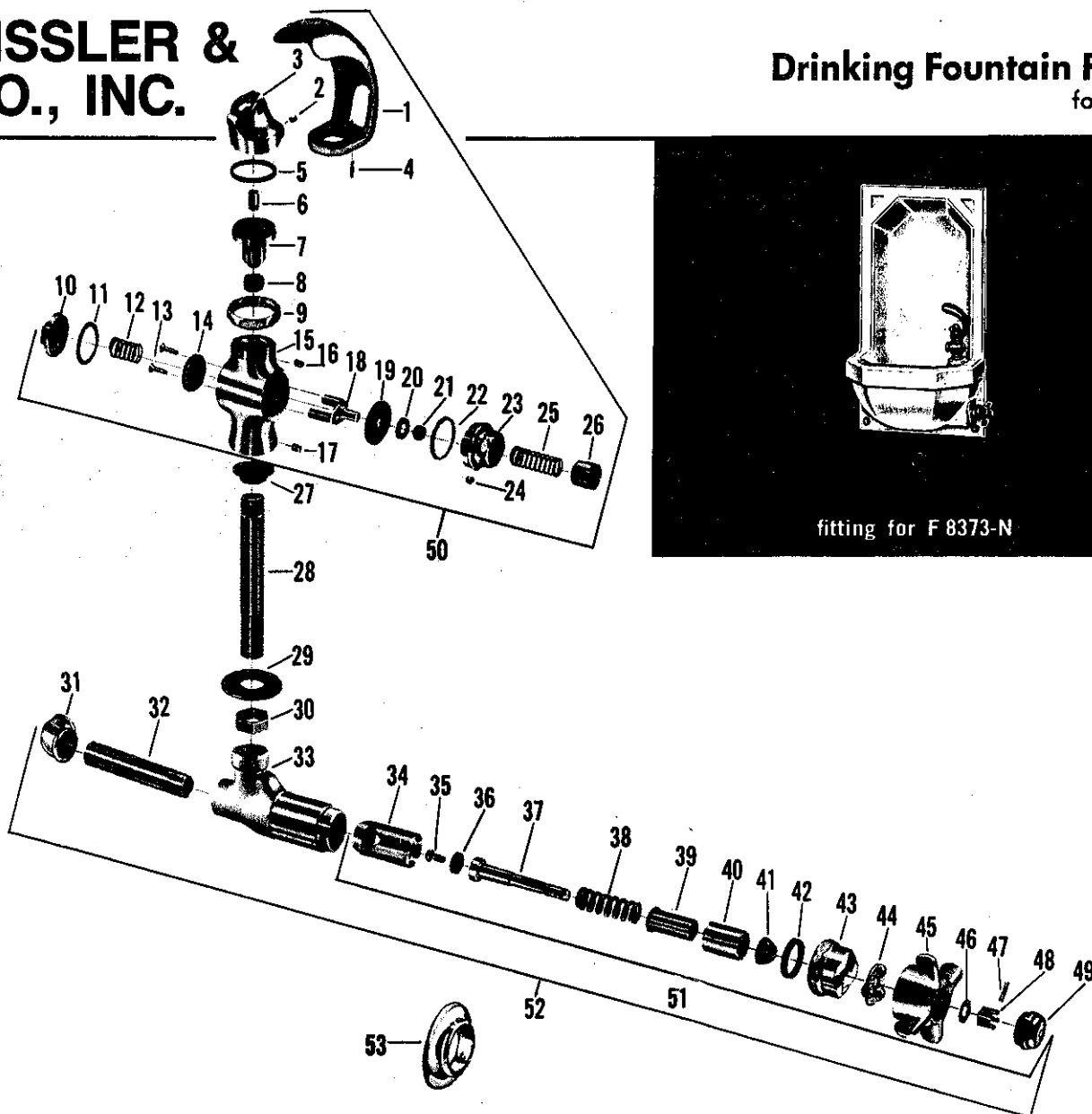


no.	description	part no.	F 8355	no.	description	part no.	F 8355
1	Bubbler Guard	34715-02		25	Spacer	40394-08	
2	Pin for Bubbler Guard	34716-08		26	Stem Packing	129-07	
3	Bubbler	34713-02		27	Cap Washer	1044-07	
4	Set Screw for Bubbler	340-05		28	Cap	21430-02	
5	Jet	34761-08		29	Ball Race	527-17	
6	Bubbler Washer	487-07		30	Handle	23437-02	
7	Bubbler Shank	34708-08		31	Friction Washer	21771-08	
8	Shank Washer	58-07		32	Handle Nut	1150-07	
9	Washer for Socket	28-17		33	Pin	433-07	
10	Socket	34709-08		34	Handle Cap	23098-02	
11	Supply Tube	1713-07		35	Strainer Screw	1116-01	
12	Regulator S/A*	11703-08		36	Strainer Grate	28072-02	
13	Valve Body	34712-04		37	Strainer Plug	28170-02	
14	Stop S/A	11704-08		38	Plug Washer	37-17	
15	Lock Nut	24526-08		39	Friction Washer	20645-09	
16	Friction Ring	20829-09		40	Socket	28043-08	
17	Cushion Washer	49-17		41	Tailpiece	39139-08	
18	Flange	68040-02		42	Bubbler & Socket S/A	8151-02	
19	Re-Nu Sleeve	21376-08		43	Assembled Strainer Plug	15056-02	
20	Seat Washer Screw	159-17		44	Re-Nu Self-closing Unit	11708-02	
21	Seat Washer	1171-27		45	Valve S/A	11702-02	
22	Stem w/washer & Screw	21191-08		Sub-assembly Furnished complete with Outlet Trap under-#17313-02			
23	Spring	1188-07					
24	Gland	33898-08					

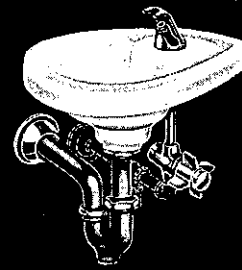
*Note - Refer to B 840 on page 284 for Internal Parts

KISSLER & CO., INC.

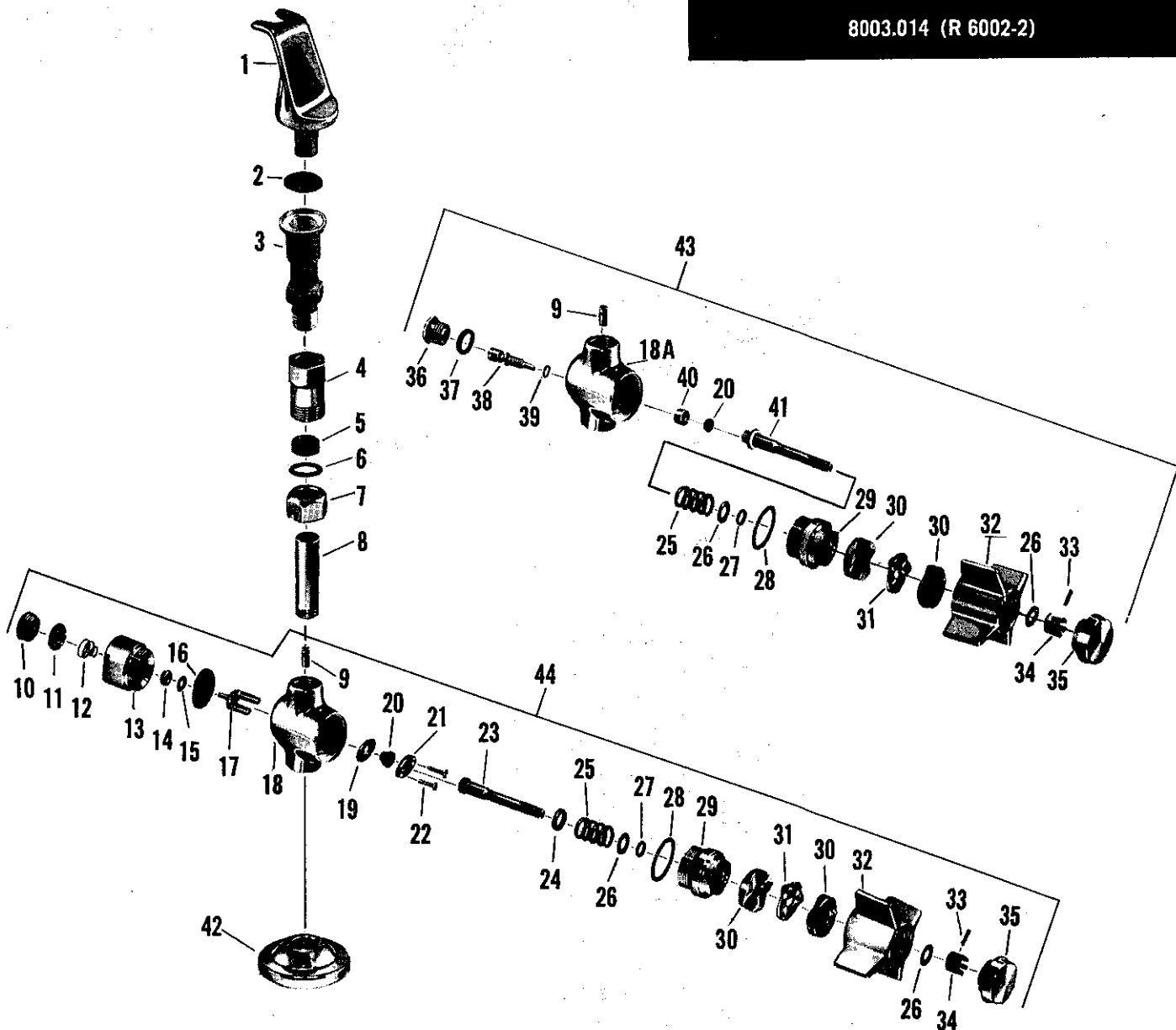
Drinking Fountain Fitting for Cardic



no.	description	part no.	F 8373 N	no.	description	part no.	F 8373 N
1	Bubbler Guard	34715-02		28	Bubbler Supply Pipe	24759-08	
2	Set Screw for Bubbler	219-15		29	Friction Washer	421-37	
3	Bubbler	34713-02		30	Lock Nut	225-17	
4	Pin for Bubbler Guard	34716-08		31	Ell	1466-07	
5	Bubbler Washer	487-07		32	3/8" x 3 1/4" Pipe - 2 Thds.	41864-08	
6	Jet	34761-08		33	Valve Body	37412-02	
7	Spud for Bubbler	335-37		34	Re-Nu Sleeve	21376-08	
8	Washer	141-17		35	Seat Washer Screw	159-17	
9	Lock Nut	40326-02		36	Seat Washer	1171-27	
10	Cap	40356-02		37	Stem w/washer & Screw	21191-08	
11	Cap Washer	142-07		38	Spring	1188-07	
12	Spring	43-27		39	Gland	33898-08	
13	Yoke Screw	307-07		40	Spacer	40394-08	
14	Yoke Disc	40359-08		41	Stem Packing	129-07	
15	Body (Bubbler)	34735-02		42	Cap Washer	1044-07	
16	Spud Set Screw	340-05		43	Cap	21430-02	
17	Body Set Screw	1165-05		44	Ball Race	527-17	
18	Yoke	104-08		45	Handle	23437-02	
19	Diaphragm	119-07		46	Friction Washer	21771-08	
20	Brass Washer	1456-07		47	Pin	433-07	
21	Yoke Lock Nut	40363-08		48	Handle Nut	1150-07	
22	Brass Friction Ring	1455-07		49	Handle Cap	23098-02	
23	Regulator Cap	40117-02		50	Bubbler S/A	11718-02	
24	Regulator Cap Set Screw	1164-05		51	Re-Nu Unit Assembly	11708-02	
25	Regulator Spring	13-27		52	Valve S/A	11726-02	
26	Regulating Screw	40118-02		53	Valve Body Escutcheon	31202-02	
27	Washer	58-07					



8003.014 (R 6002-2)



no.	description	part no.	R 6002-2	R 6003-2	R 6102-1	R 6102-2
1	Bubbler w/washer	7454-02				
2	Socket Washer	28-17				
3	Socket	25681-07				
	Socket	25686-07				
4	Supply Connection*	1716-02*				
5	Slip Joint Washer	117-07				
6	Friction Washer	359-07				
7	Slip Joint Nut	24970-02				
8	3/8" x 1 3/4" Pipe - 1 Thread	42920-02				
9	Jet	1705-07				
10	Screw Cap	1706-02				
11	Adjusting Screw	1709-07				
12	Spring	1784-07				
13	Spring Chamber	1707-02				
14	Nut	1115-07				
15	Washer	94-27				
16	Diaphragm	152-27				
17	Yoke	1005-17				
18	Body	25682-02				
18A	Body	25394-02				
19	Seat Washer Holder	1441-37				
20	Seat Washer	1398-27				
21	Seat Washer Plate	1440-37				
22	Screw	307-07				
23	Stem	1710-07				
24	Retaining Washer	113-17				
25	Spring	1718-07				
26	Friction Washer	21771-07				
27	"O" Ring	70575-07				
28	Static Seal	507-37				
29	Spring Housing	519-22				
30	Cam	171-37				
31	Ball Race	527-17				
32	Handle	92-22				
33	Pin	433-07				
34	Handle Nut	1150-07				
35	Handle Cap	1312-32				
36	Screw Cap	37417-02				
37	Screw Cap Washer	1040-17				
38	Adjusting Screw	958-27				
39	"O" Ring	73048-07				
40	Seat Washer Holder	1745-07				
41	Stem	25687-07				
42	Escutcheon	751-16				
43	Valve S/A (Manual Regulation)	7439-02				
44	Valve S/A (Automatic Regulation)	7465-02				

• NOT AVAILABLE

*Note: Supply connections S/A 7450-02 consists of (1) each items 4, 5, 6 and 7.

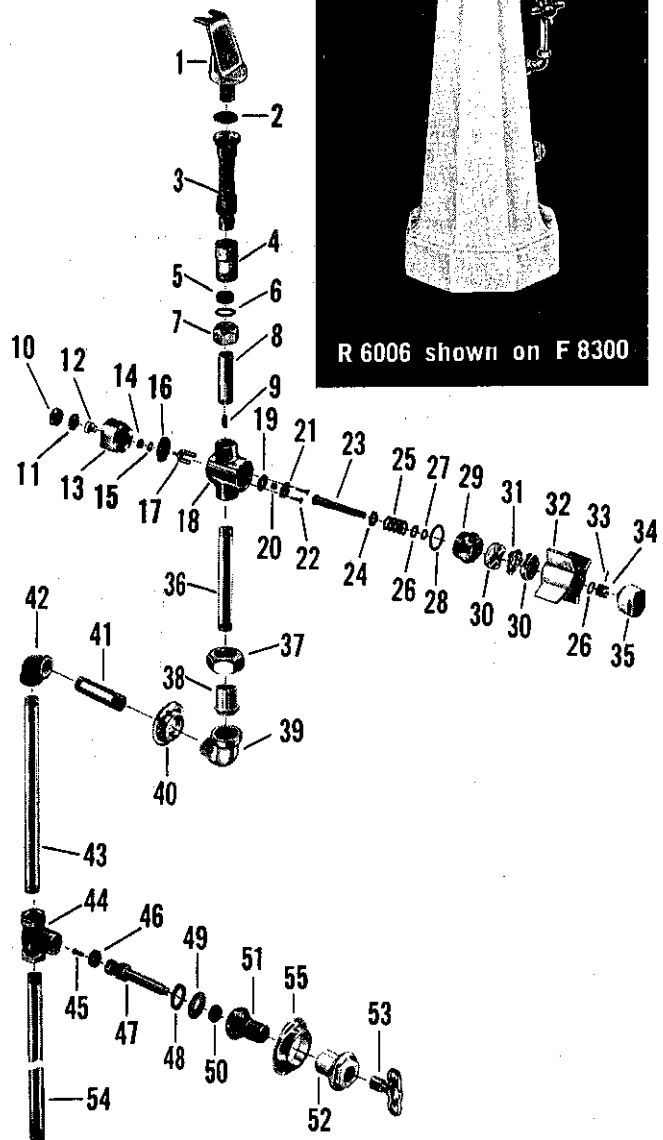
no.	description	part no.	R 6006
1	Bubbler w/washer	7454-02	
2	Washer	28-17	
3	Socket	25686-07	
4	Supply Connection*	1716-02*	
5	Slip Joint Washer	117-07	
6	Friction Ring	359-07	
7	Slip Joint Nut	24970-02	
8	3/8" x 1 3/4" Pipe - 1 Thd.	42920-02	
9	Jet	1705-07	
10	Cap Screw	1706-02	
11	Adjusting Screw	1709-07	
12	Spring	1784-07	
13	Spring Chamber	1707-02	
14	Nut	1115-07	
15	Washer	94-27	
16	Diaphragm	152-27	
17	Yoke	1005-17	
18	Body	25682-02	
19	Seat Washer Holder	1441-37	
20	Seat Washer	1398-27	
21	Seat Washer Plate	1440-37	
22	Screw	307-07	
23	Stem	1710-07	
24	Retaining Washer	113-17	
25	Spring	1718-07	
26	Friction Washer	21771-07	
27	"O" Ring	70575-07	
28	Static Seal	507-37	
29	Spring Housing	519-22	
30	Cam	171-37	
31	Ball Race	527-17	
32	Handle	92-22	
33	Pin	433-07	
34	Handle Nut	1150-07	
35	Handle Cap	1312-32	
36	3/8" x 3 13/32" Pipe - 2 Thds.	42024-02*	
37	Swivel Nut	24207-02	
38	Male Swivel	23984-02	
39	Union Ell	26828-02	
40	Flange w/set Screw	31551-02*	
41	3/8" x 2 1/4" Pipe - 2 Thds.	42078-04*	
42	3/8" x S.P.S 90° Ell	1466-07	
43	3/8" x 6 3/4" Pipe - 2 Thds.	42074-07*	
44	Stop Body	92192-07*	
45	Seat Washer Screw	169-07	
46	Seat Washer	441-07	
47	Stem w/washer & Screw	31297-04*	
48	Cap Washer	1863-07	
49	Washer	21625-07	
50	Stem Packing	1311-07	
51	Cap	25269-07*	
52	Flange Holder	25199-02*	
53	Key	1187-07	
54	3/8" x 10 1/8" Pipe - 2 Thds.	42075-07*	
55	Flange	31546-02*	

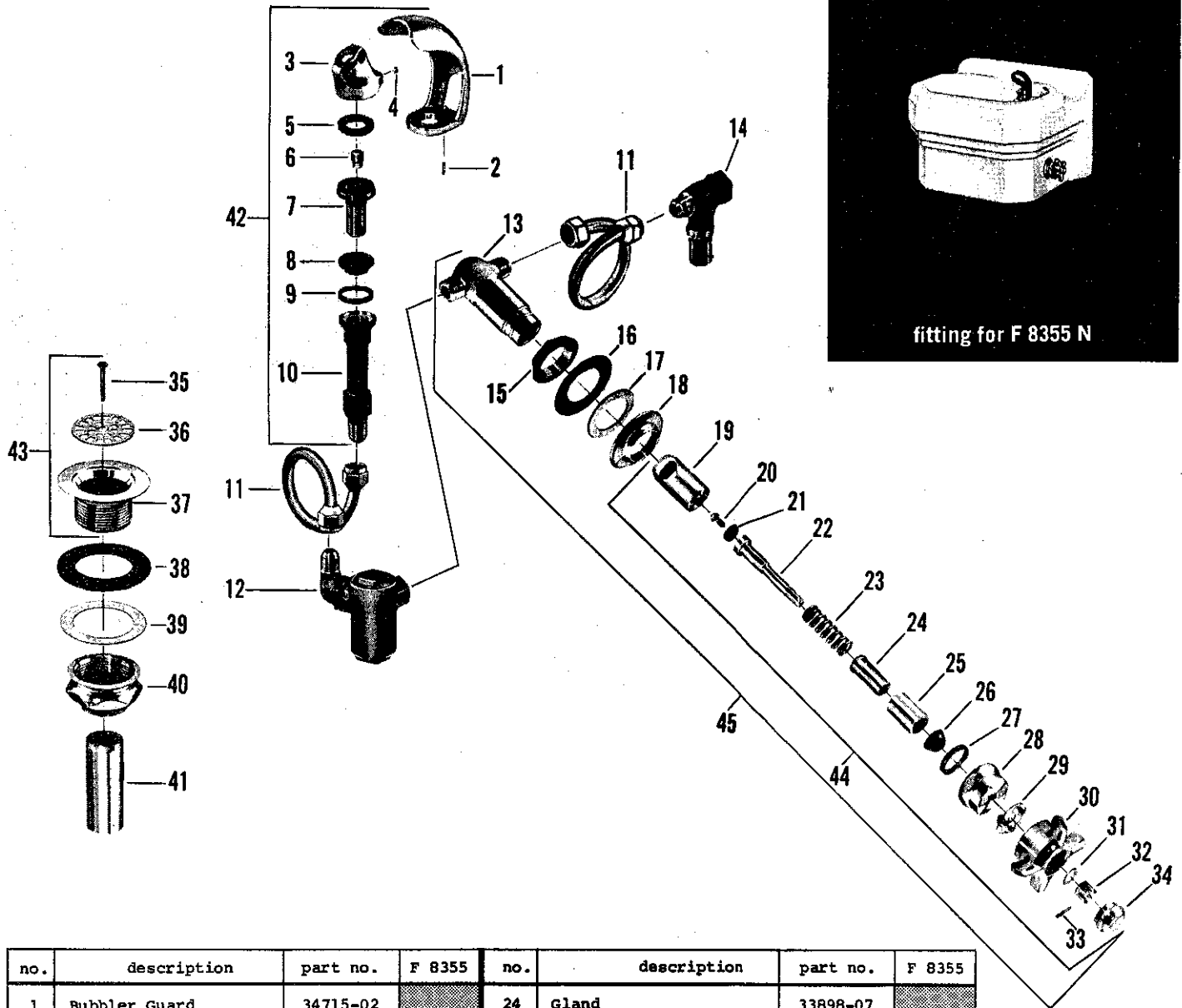
Sub-assemblies

Self-closing Valve S/A - (Parts 9 thru 35) - #7465-02

• NOT AVAILABLE

*Note: Supply connection S/A #7450-02 consists of (1) each items 4,5,6 and 7.



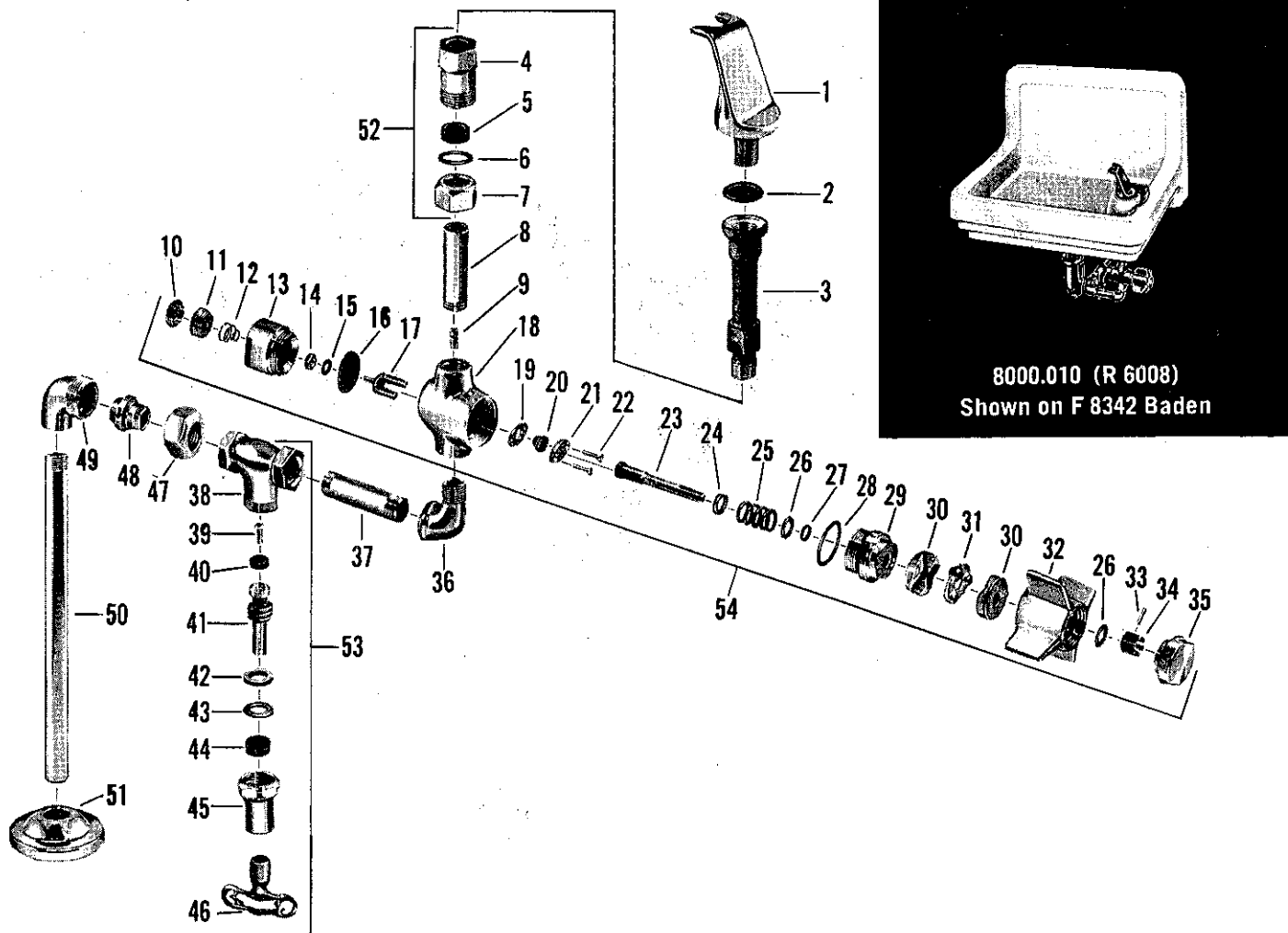


no.	description	part no.	F 8355	no.	description	part no.	F 8355
1	Bubbler Guard	34715-02		24	Gland	33898-07	
2	Pin for Bubbler Guard	34716-07		25	Spacer	40394-07	
3	Bubbler	34713-02		26	Stem Packing	129-07	
4	Set Screw for Bubbler	340-05		27	Cap Washer	1044-07	
5	Bubbler Washer	456-07		28	Cap	21430-02	
6	Jet	34761-07		29	Ball Race	527-17	
7	Bubbler Shank	34708-07		30	Handle	23437-02	
8	Shank Washer	58-07		31	Friction Washer	21771-07	
9	Washer for Socket	28-17		32	Handle Nut	1150-07	
10	Socket	34709-07		33	Pin	433-07	
11	Supply Tube	1713-07		34	Handle Cap	23098-02	
12	Regulator S/A*	11703-07		35	Strainer Screw	1116-01	
13	Valve Body	34712-04		36	Strainer Grate	28072-07	
14	Stop S/A	11704-07*		37	Strainer Plug	28170-02	
15	Lock Nut	24526-07*		38	Plug Washer	37-17	
16	Friction Ring	20829-09		39	Friction Washer	20645-09	
17	Cushion Washer	49-17		40	Socket	28043-04	
18	Flange	68040-02		41	Tailpiece	39139-07*	
19	Re-Nu Sleeve	21376-07		42	Bubbler & Socket S/A	8151-02*	
20	Seat Washer Screw	169-07		43	Assembled Strainer Plug	15056-02*	
21	Seat Washer	1171-27		44	Re-Nu Self-Closing Unit	11708-02	
22	Stem w/Washer & Screw	31300-07		45	Valve S/A	11702-02	
23	Spring	1188-07					

* Note - Refer to R-6000 for Internal Parts

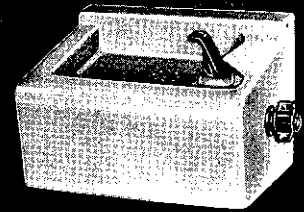
* NOT AVAILABLE

**AMERICAN
STANDARD**

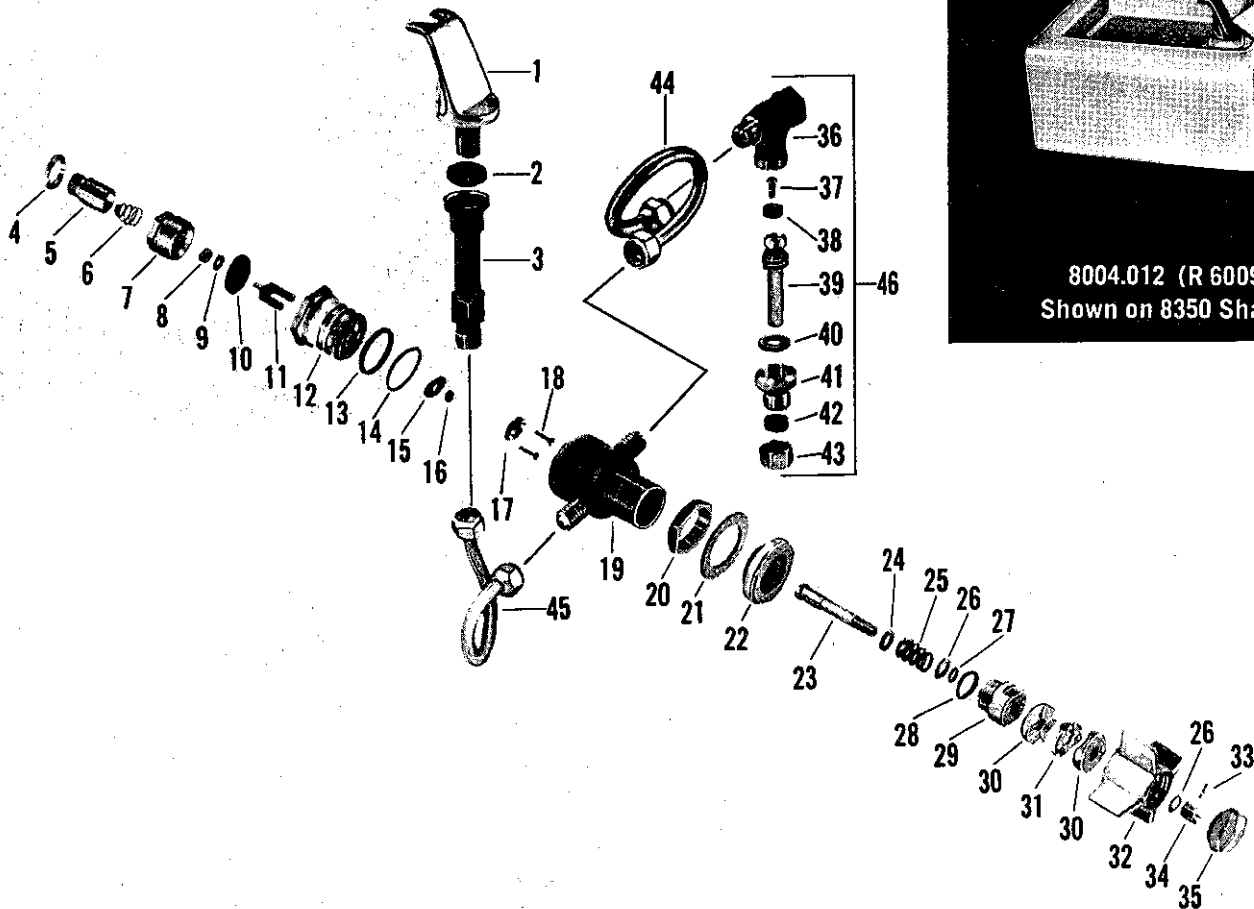


no.	description	part no.	R 6008 for F 8342-3-5-6	no.	description	part no.	R 6008 for F 8342-3-5-6
1	Bubbler w/washer	7454-02		28	Static Seal	507-37	
2	Washer for Socket	28-17		29	Spring Housing	519-22	
3	Socket	25686-07		30	Cam	171-37	
4	Supply Connection	1716-02*		31	Ball Race	527-17	
5	Slip Joint Washer	117-07		32	Handle	92-22	
6	Friction Ring	359-07		33	Pin	433-07	
7	Slip Joint Nut	24970-02		34	Handle Nut	1150-07	
8	3/8" x 2 1/8" Pipe - 1 Thd.	41214-02		35	Handle Cap	1312-32	
9	Jet	1705-07		36	3/8" S.P.S. Street Ell	1473-02	
10	Screw	1706-02		37	3/8" x 2 5/8" Pipe - 2 Thds.	41003-02	
11	Adjusting Screw	1709-07		38	Stop Body	92192-02*	
12	Spring	1784-07		39	Seat Washer Screw	169-07	
13	Spring Chamber	1707-02		40	Seat Washer	441-07	
14	Lock Nut	1115-07		41	Stem w/washer & Screw	63371-05	
15	Washer	94-27		42	Cap Washer	1863-07	
16	Diaphragm	152-27		43	Washer	21625-07	
17	Yoke	1005-17		44	Stem Packing	1311-07	
18	Valve Body	25682-02		45	Cap	21424-02	
19	Seat Washer Holder	1441-37		46	Loose Key	1187-07	
20	Seat Washer	1398-27		47	Coupling Nut	24253-02	
21	Seat Washer Plate	1440-37		48	Ground Joint Coupling	23968-04	
22	Screw	307-07		49	Ground Joint Ell	26828-02	
23	Stem	1710-07		50	3/8" x 8" Pipe - 1 Thread	39402-02	
24	Retaining Washer	113-17		51	Wall Escutcheon	751-16	
25	Spring	1718-07		52	Slip Joint Connection S/A	7450-02	
26	Friction Washer	21771-07		53	Loose Key Stop S/A	2500-02*	
27	"O" Ring	70575-07		54	Valve S/A	7465-02	

• NOT AVAILABLE



8004.012 (R 6009)
Shown on 8350 Sharon



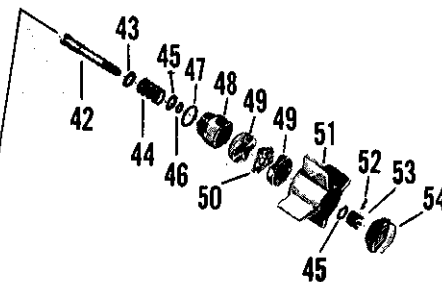
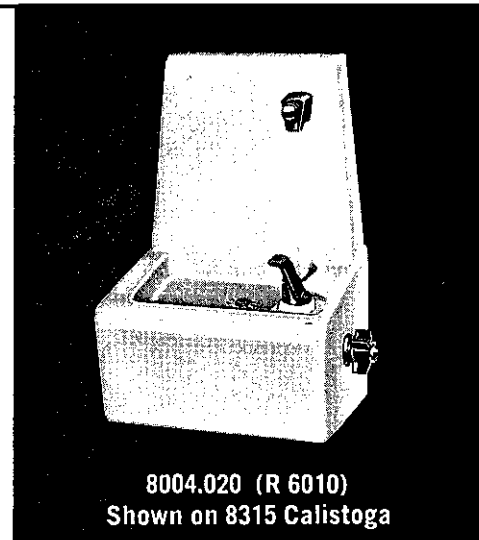
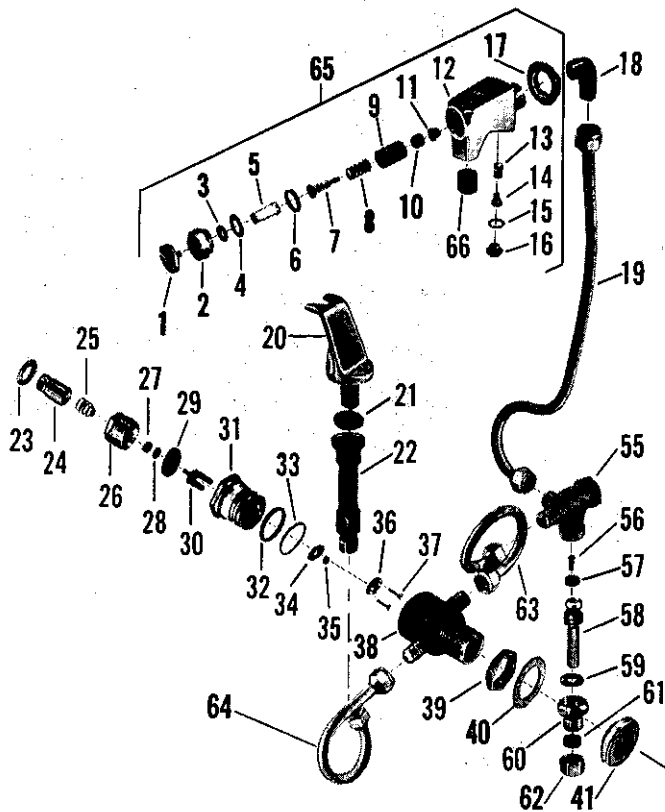
no.	description	part no.	R 6009 for F 8305-10-16	no.	description	part no.	R 6009 for F 8305-10-16
1	Bubbler w/Washer	7454-02		26	Friction Washer	21771-07	
2	Washer for Socket	28-17		27	"O" Ring	70575-07	
3	Socket	34709-07		28	Static Seal	27-37	
4	Lock Ring	187-27		29	Spring Housing	34-22	
5	Adjusting Nut	539-17		30	Cam	171-37	
6	Spring	1708-07		31	Ball Race	527-17	
7	Spring Chamber	1174-17		32	Handle	92-22	
8	Lock Nut	1115-07		33	Pin	433-07	
9	Washer	94-27		34	Handle Nut	1150-07	
10	Diaphragm	152-27		35	Handle Cap	1312-32	
11	Yoke	1005-17		36	Stop Body	34711-07*	
12	Sleeve	1101-27		37	Seat Washer Screw	169-07	
13	Static Seal	1719-07		38	Seat Washer (Stop)	441-07	
14	Washer	9-27		39	Stem w/Washer & Screw	31290-07	
15	Seat Washer Holder	1441-37		40	Cap Washer	1863-07	
16	Seat Washer (Valve)	1398-27		41	Stuffing Box Cap	21423-04	
17	Seat Washer Plate	1440-37		42	Stem Packing	1311-07	
18	Screw	307-07		43	Stuffing Nut	25015-02	
19	Valve Body	25376-07		44	Supply Tube (Stop to Valve)	1713-07	
20	Lock Nut	25045-07		45	Supply Tube (Valve to Bubbler)	1714-07	
21	Friction Washer	1013-29		46	Stop S/A	7479-07	
22	Escutcheon	1198-32		Sub-assemblies Valve S/A - (Parts 4 thru 35) - #7461-02 Sleeve S/A - (Parts 8 thru 18) - #34625-07			
23	Stem	1711-07					
24	Retaining Washer	113-17					
25	Spring	1718-07					

Note - Access Plaque (not illustrated) - #1376-29

For Repair Kit - See page 5-37

• NOT AVAILABLE

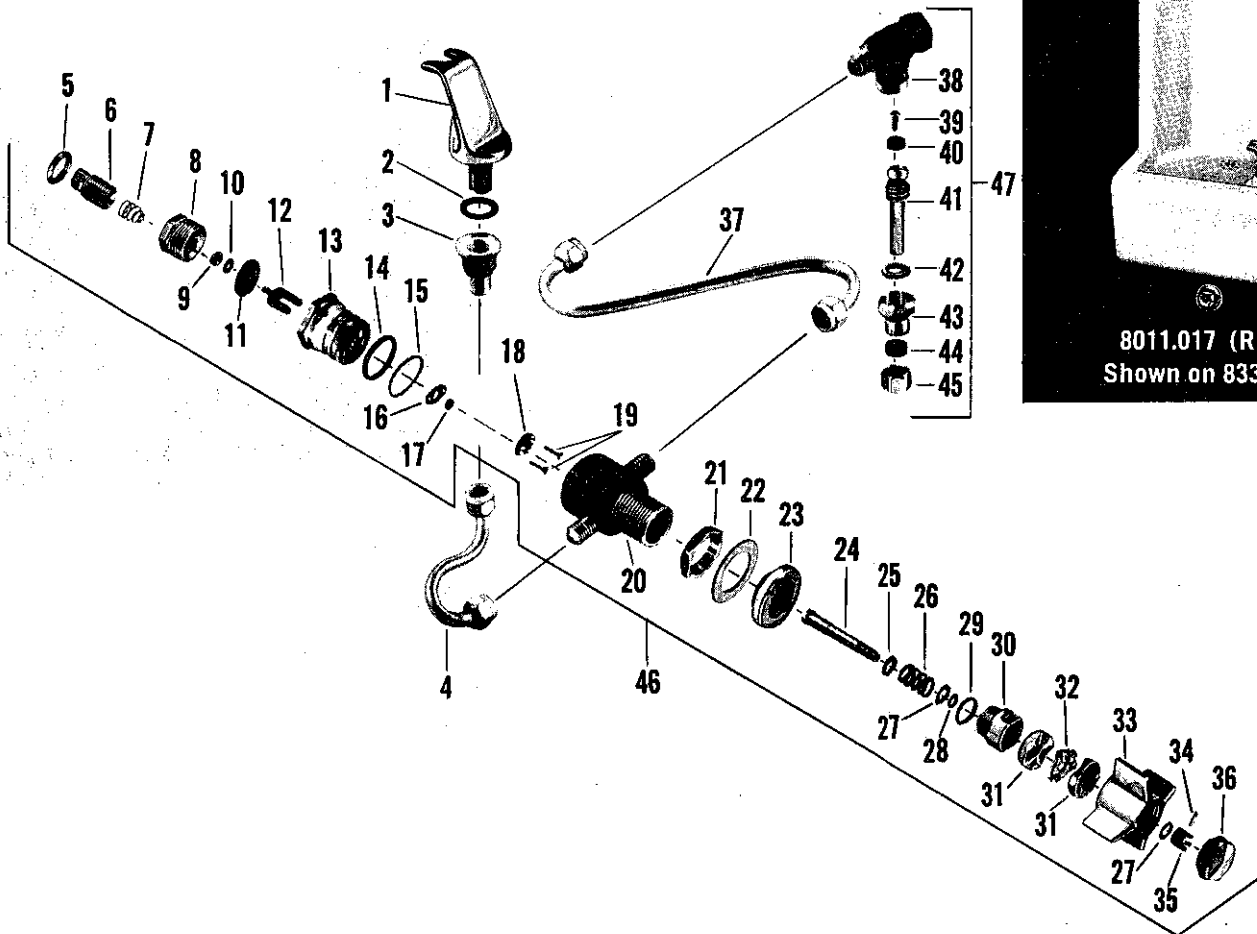




no.	description	part no.	R 6010	no.	description	part no.	R 6010
1	Push Button	775-32		36	Seat Washer Plate	1440-37	
2	Packing Nut	537-12		37	Screw	307-07	
3	"O" Ring	888-17		38	Body	25376-07	
4	Washer	21625-07		39	Lock Nut	25045-07	
5	Upper Stem	1006-14		40	Friction Washer	1013-29	
6	Washer	1043-07		41	Escutcheon	1198-32	
7	Lower Stem	21724-07		42	Stem	1711-07	
8	Spring	33-27		43	Retaining Washer	113-17	
9	Sleeve	21389-07		44	Spring	1718-07	
10	Seat Washer	53-07		45	Friction Washer	21771-07	
11	Seat Washer Holder	40219-07		46	"O" Ring	70575-07	
12	Body	25378-02*		47	Static Seal	27-37	
13	Spring	1283-27		48	Spring Housing	34-22	
14	Regulating Screw	34745-07		49	Cam	171-37	
15	Washer	1040-17		50	Ball Race	527-17	
16	Regulating Screw Cap	37417-02		51	Handle	92-22	
17	Lock Nut	24409-07		52	Pin	433-07	
18	Supply Ell	25940-07		53	Handle Nut	1150-07	
19	Supply Tube	1724-07*		54	Handle Cap	1312-32	
20	Bubbler w/washer	7454-02		55	Stop Body	25377-07*	
21	Washer	28-17		56	Seat Washer Screw	169-07	
22	Socket	34709-07		57	Seat Washer	441-07	
23	Lock Ring	187-27		58	Stem Washer & Screw	31290-07	
24	Adjusting Nut	539-17		59	Cap Washer	1863-07	
25	Spring	1708-17		60	Stuffing Box Cap	21423-04	
26	Spring Chamber	1174-17		61	Packing	1311-07	
27	Lock Nut	1115-07		62	Stuffing Nut	25015-02	
28	Washer	94-27		63	Supply Tube (Stop)	1713-07	
29	Diaphragm	152-27		64	Supply Tube (Bubbler)	1714-07	
30	Yoke	1005-17		65	Glass Filler S/A	7581-02*	
31	Sleeve	1101-27		66	Stream Regulator	33995-07	
32	Static Seal	1719-07		Sub-assemblies			
33	Washer	9-27		Stop S/A - (Parts 55 thru 62) - #7467-07			
34	Seat Washer Holder	1441-37		Valve S/A - (Parts 23 thru 54) - #7461-02			
35	Seat Washer	1398-27		Sleeve S/A - (Parts 27 thru 37) - #34625-07			

Note - Access Plate (not illustrated) - #1376-29
For Repair Kit - see page 5-37

• NOT AVAILABLE



8011.017 (R 6011)
Shown on 8333 Tioga

no.	description	part no.	R 6011 for F 8333	no.	description	part no.	R 6011 for F 8333
1	Bubbler w/washer	7454-02		25	Retaining Washer	113-17	
2	Washer for Socket	28-17		26	Spring	1718-07	
3	Socket	25685-07		27	Friction Washer	21771-07	
4	Supply Tube (Valve to Bubbler)	1715-07		28	"O" Ring	70575-07	
5	Lock Ring	187-27		29	Static Seal	27-37	
6	Adjusting Nut	539-17		30	Spring Housing	34-22	
7	Spring	1708-07		31	Cam	171-37	
8	Spring Chamber	1174-17		32	Ball Race	527-17	
9	Lock Nut	1115-07		33	Handle	92-22	
10	Washer	94-27		34	Pin	433-07	
11	Diaphragm	152-27		35	Handle Nut	1150-07	
12	Yoke	1005-17		36	Handle Cap	1312-32	
13	Sleeve	1101-27		37	Supply Tube (Stop to Valve)	1712-07	
14	Static Seal	1719-07		38	Stop Body	34711-07*	
15	Washer	9-27		39	Seat Washer Screw	169-07	
16	Seat Washer Holder	1441-37		40	Seat Washer	441-07	
17	Seat Washer	1398-27		41	Stem w/washer & Screw	31290-07	
18	Seat Washer Plate	1440-37		42	Cap Washer	1863-07	
19	Screw	307-07		43	Stuffing Box Cap	21423-04	
20	Valve Body	25376-07		44	Stem Packing	1311-07	
21	Lock Nut	25045-07		45	Stuffing Nut	25015-02	
22	Friction Washer	1013-29		46	Valve S/A	7461-02	
23	Escutcheon	1198-32		47	Stop S/A	7479-07	
24	Stem	1711-07		Sub-assembly			
				Sleeve S/A - (Parts 9 thru 19) - #34625-07			

Note - Access Plate (not illustrated) - #1376-29

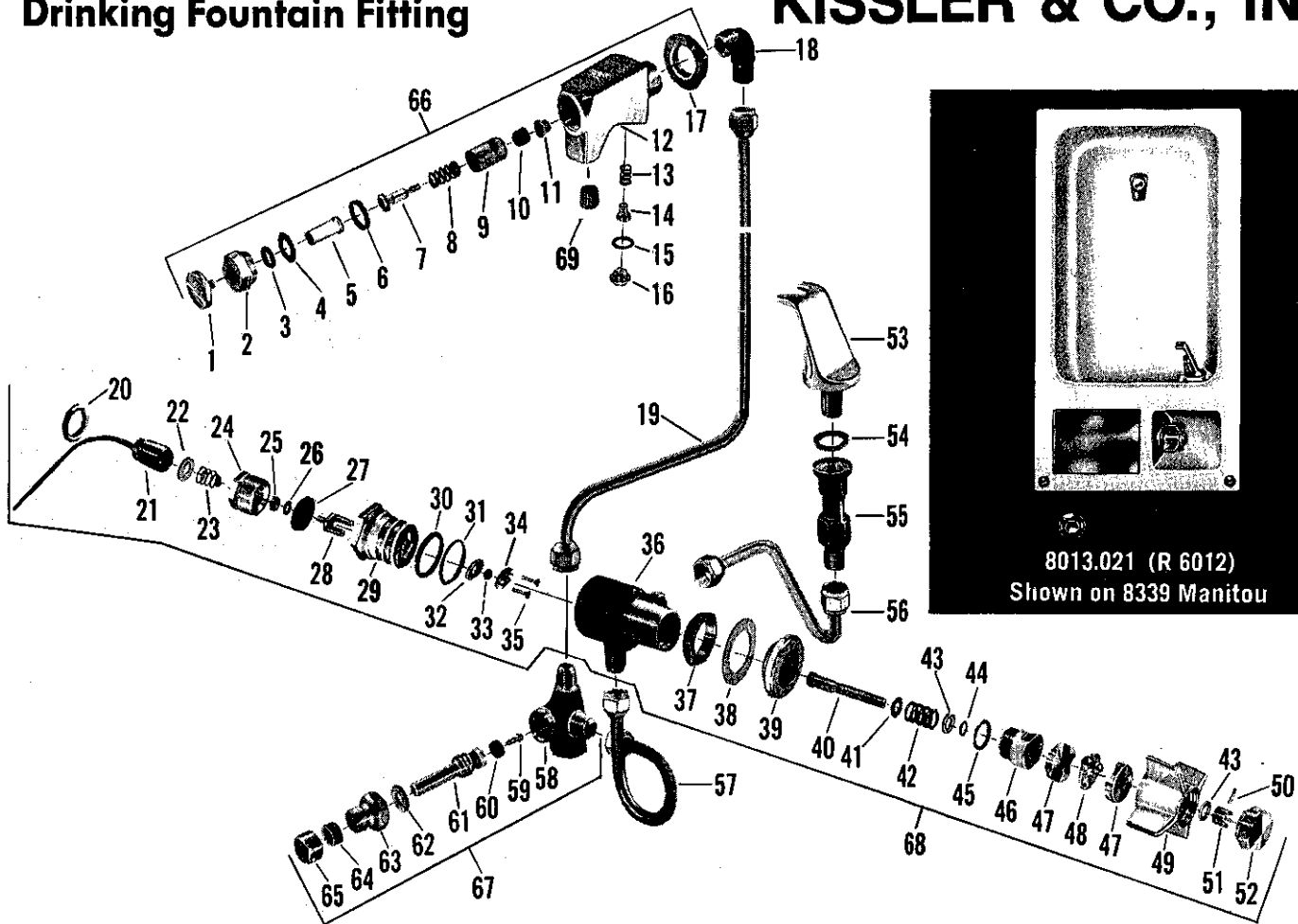
• NOT AVAILABLE

For Repair Kit - see page 5-37



Drinking Fountain Fitting

KISSLER & CO., INC.



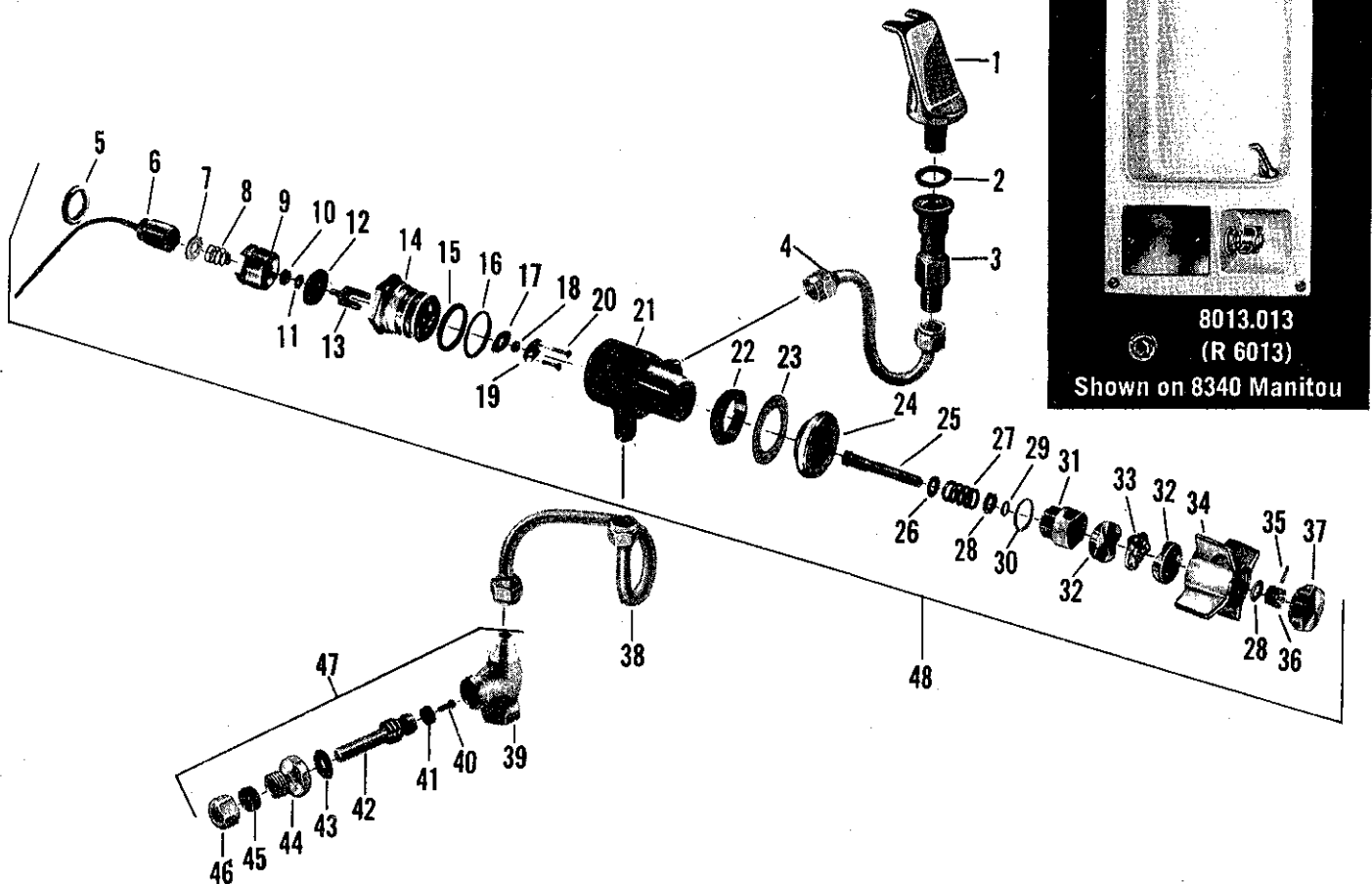
no.	description	part no.	R 6012 for F 8339	no.	description	part no.	R 6012 for F 8339
1	Push Button	775-32		35	Screw	307-07	
2	Packing Nut	537-12		36	Valve Body	25382-07	
3	"O" Ring	888-17		37	Lock Nut	25045-07	
4	Washer	21625-07		38	Friction Washer	1013-29	
5	Upper Stem	1006-14		39	Escutcheon	1198-32	
6	Washer	1043-07		40	Stem	1711-07	
7	Lower Stem	21724-07		41	Retaining Washer	113-17	
8	Spring	33-27		42	Spring	1718-07	
9	Sleeve	21389-07		43	Friction Washer	21771-07	
10	Seat Washer	53-07		44	"O" Ring	70575-07	
11	Seat Washer Holder	40219-07		45	Static Seal	27-37	
12	Body (Glass Filler)	25378-02*		46	Spring Housing	34-22	
13	Spring	1283-27		47	Cam	171-37	
14	Regulating Screw	34745-07		48	Ball Race	527-17	
15	Washer	1040-17		49	Handle	92-22	
16	Regulating Screw Cap	37417-02		50	Pin	433-07	
17	Lock Nut	24409-07		51	Handle Nut	1150-07	
18	Supply Ell	25940-07		52	Handle Cap	1312-32	
19	Supply Tube	1754-07		53	Bubbler w/washer	7454-02	
	(Stop to Glass Filler)			54	Washer for Socket	28-17	
20	Lock Ring	187-27		55	Socket	25680-07	
21	Leak Tube w/nut	7457-07		56	Supply Tube (Valve to Bubbler)	1756-07	
22	Brass Washer	968-27		57	Supply Tube (Stop to Valve)	1755-07	
23	Spring	1708-07		58	Stop Body	25691-07*	
24	Spring Chamber	1174-17		59	Seat Washer Screw	169-07	
25	Lock Nut	1115-07		60	Seat Washer	441-07	
26	Washer	94-27		61	Stem w/washer & Screw	31290-07	
27	Diaphragm	152-27		62	Cap Washer	1863-07	
28	Yoke	1005-17		63	Stuffing Box Cap	21423-04	
29	Sleeve	1101-27		64	Stem Packing	1311-07	
30	Static Seal	1719-07		65	Stuffing Nut	25015-02	
31	Washer	9-27		66	Glass Filler S/A	7581-02*	
32	Seat Washer Holder	1441-37		67	Stop S/A	7487-07	
33	Seat Washer	1398-27		68	Valve S/A	7488-02	
34	Seat Washer Plate	1440-37		69	Stream Regulator	33995-07	

Note - Access Plate (not illustrated) - #760-29

Sub-assembly
Sleeve S/A - (Parts 25 thru 35) - #34625-07

For Repair Kit - see page 5-37

● NOT AVAILABLE



no.	description	part no.	R 6013	no.	description	part no.	R 6013
1	Bubbler w/washer	7454-02		25	Stem	1711-07	
2	Washer	28-17		26	Retaining Washer	113-17	
3	Socket	25680-07		27	Spring	1718-07	
4	Supply Tube to Bubbler	1756-07		28	Friction Washer	21771-07	
5	Lock Ring	187-27		29	"O" Ring	70575-07	
6	Leak Tube w/nut	7457-07		30	Static Seal	27-37	
7	Washer	968-27		31	Spring Housing	34-22	
8	Spring	1708-07		32	Cam	171-37	
9	Spring Chamber	1174-17		33	Ball Race	527-17	
10	Nut	1115-07		34	Handle	92-22	
11	Washer	94-27		35	Pin	433-07	
12	Diaphragm	152-27		36	Handle Nut	1150-07	
13	Yoke	1005-17		37	Handle Cap	1312-32	
14	Sleeve	1101-27		38	Supply Tube to Valve	1759-07	
15	"O" Ring	1719-07		39	Stop Body	34711-07*	
16	Washer	9-27		40	Seat Washer Screw	169-07	
17	Seat Washer Holder	1441-37		41	Seat Washer	441-07	
18	Seat Washer	1398-27		42	Stem w/washer & Screw	31290-07	
19	Seat Washer Plate	1440-37		43	Cap Washer	1863-07	
20	Screw	307-07		44	Stuffing Box Cap	21423-04	
21	Valve Body	25382-07		45	Packing	1311-07	
22	Lock Nut	25045-07		46	Stuffing Nut	25015-02	
23	Friction Washer	1013-29		47	Stop S/A	7479-07	
24	Escutcheon	1198-32		48	Self-closing Valve S/A	7488-02	

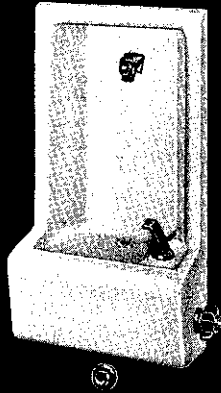
• NOT AVAILABLE

Sub-assembly

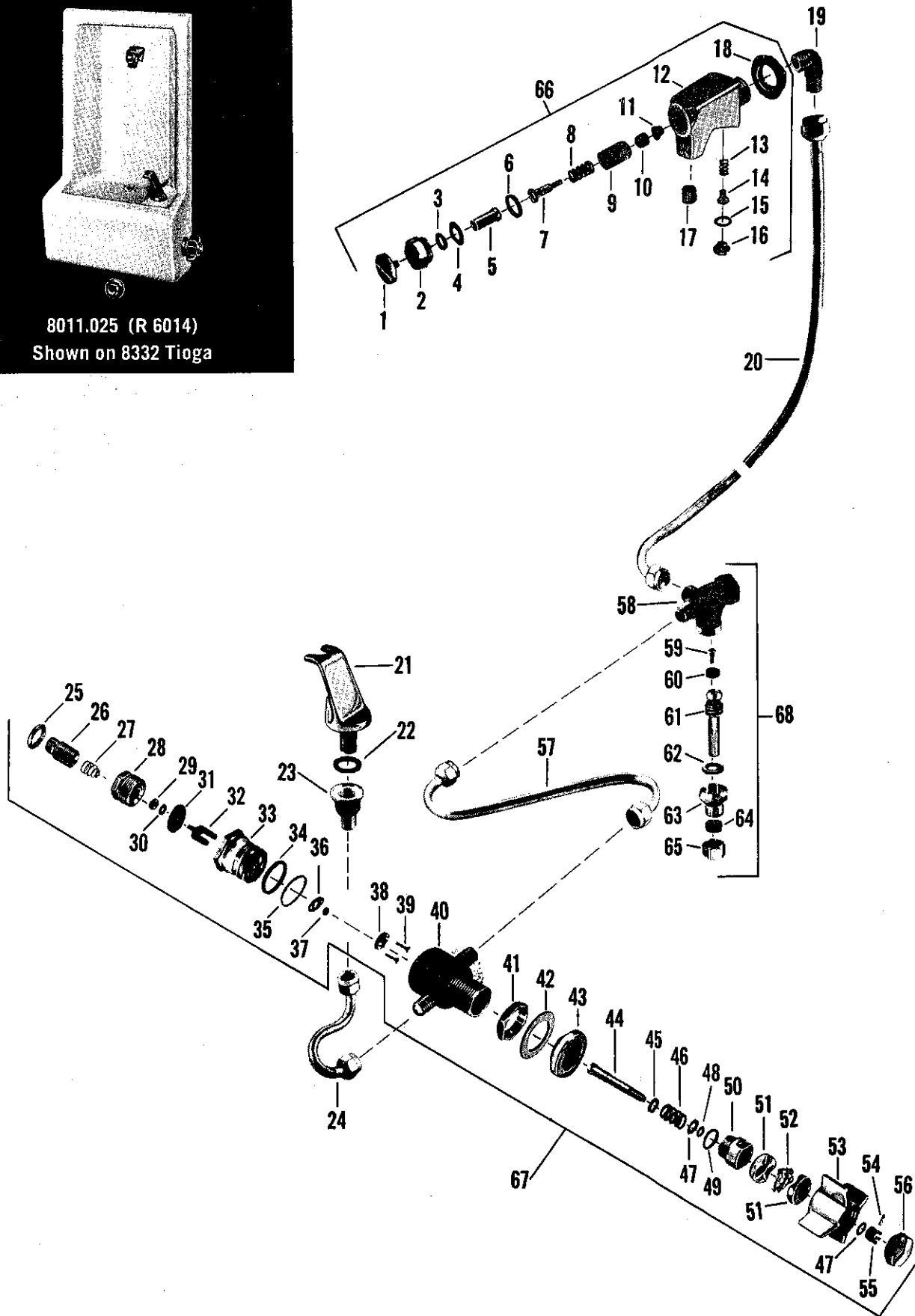
Sleeve S/A - (Parts 10 thru 20) - #34625-07

Note - Access Plate (not illustrated) - #760-29

For Repair Kit - see page 5-37



8011.025 (R 6014)
Shown on 8332 Tioga



no.	description	part no.	R 6014	no.	description	part no.	R 6014
1	Push Button	775-32		35	Washer	9-27	
2	Packing Nut	537-12		36	Seat Washer Holder	1441-37	
3	"O" Ring	888-17		37	Seat Washer	1398-27	
4	Washer	21625-07		38	Seat Washer Plate	1440-37	
5	Upper Stem	1006-14		39	Screw	307-07	
6	Washer	1043-07		40	Valve Body	25376-07	
7	Lower Stem	21724-07		41	Lock Nut	25045-07	
8	Spring	33-27		42	Friction Washer	1013-29	
9	Sleeve	21389-07		43	Escutcheon	1198-32	
10	Seat Washer	53-07		44	Stem	1711-07	
11	Seat Washer Holder	40219-07		45	Retaining Washer	113-17	
12	Body (Glass Filler)	25378-02*		46	Spring	1718-07	
13	Spring	1283-27		47	Friction Washer	21771-07	
14	Regulating Screw	34745-07		48	"O" Ring	70575-07	
15	Washer	1040-17		49	Static Seal	27-37	
16	Regulating Screw Cap	37417-02		50	Spring Housing	34-22	
17	Stream Regulator	33995-07		51	Cam	171-37	
18	Lock Nut	24409-07		52	Ball Race	527-17	
19	Supply Ell	25940-07		53	Handle	92-22	
20	Supply Tube to Glass Filler	1749-07		54	Pin	433-07	
21	Bubbler w/washer	7454-02		55	Handle Nut	1150-07	
22	Washer	28-17		56	Handle Cap	1312-32	
23	Socket	25685-07		57	Supply Tube to S.D. Stop	1712-07	
24	Supply Tube to Bubbler	1715-07		58	Stop Body	25377-07*	
25	Lock Ring	187-27		59	Seat Washer Screw	169-07	
26	Adjusting Nut	539-17		60	Seat Washer	441-07	
27	Spring	1708-07		61	Stem w/washer & Screw	31290-07	
28	Spring Chamber	1174-17		62	Cap Washer	1863-07	
29	Lock Nut	1115-07		63	Stuffing Box Cap	21423-04	
30	Washer	94-27		64	Packing	1311-07	
31	Diaphragm	152-27		65	Stuffing Nut	25015-02	
32	Yoke	1005-17		66	Glass Filler S/A	7581-02*	
33	Sleeve	1101-27		67	Self-closing Valve S/A	7461-02	
34	Static Seal	1719-07		68	Stop S/A	7467-07	

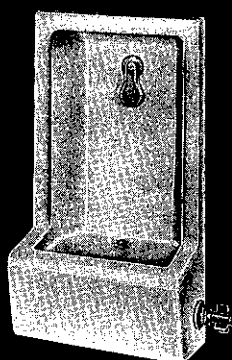
Note - Access Plate (not illustrated) - #1376-29

For Repair Kit - see page 5-37

Sub-assembly

Sleeve S/A - (Parts 29 thru 39) - #34625-07

● NOT AVAILABLE

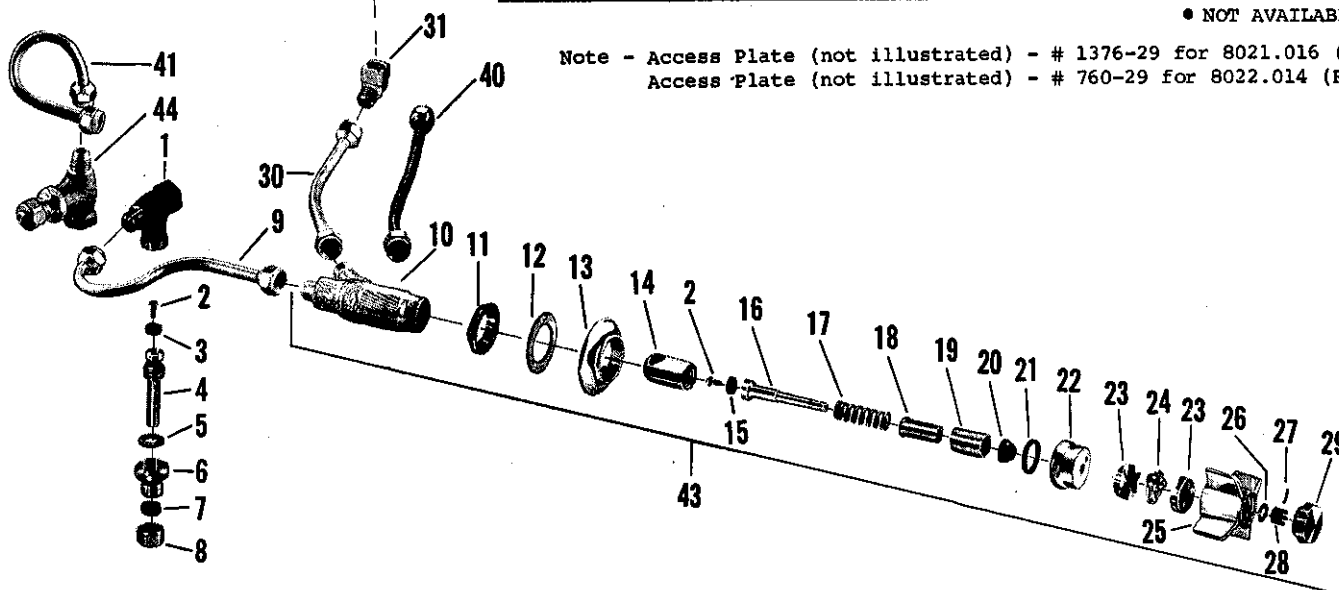


8021.016 (R 6021)
Shown on 8505
Seredor Cuspidor

no.	description	part no.	R 6021 F 8505	R 6022 F 8500
1	Stop Body	34711-07*		
2	Seat Washer Screw	169-07		
3	Seat Washer	441-07		
4	Stem w/washer & Screw	31290-07		
5	Cap Washer	1863-07		
6	Stuffing Box Cap	21423-04		
7	Packing	1311-07		
8	Stuffing Nut	25015-02		
9	Supply Tube to Valve	1750-07*		
10	Valve Body	25381-04		
11	Lock Nut	24526-07*		
12	Friction Washer	20829-09		
13	Flange	68040-02		
14	Sleeve	21376-07		
15	Seat Washer	1171-27		
16	Stem w/washer & Screw	31331-07		
17	Spring	1188-07		
18	Gland	33898-07		
19	Spacer	40394-07		
20	Stem Packing	129-07		
21	Cap Washer	1044-07		
22	Cap	364-12		
23	Cam	171-37		
24	Ball Race	527-17		
25	Handle	92-22		
26	Friction Washer	21771-07		
27	Pin	433-07		
28	Handle Nut	1150-07		
29	Handle Cap	1312-32		
30	Supply Tube to Spreader	1789-07*		
31	Adapter Elbow	1782-07		
32	Supply Ell for Spreader	25678-07		
33	Static Seal	27-37		
34	Washer	67-07		
35	Spreader Body	25677-02*		
36	Adjusting Plate w/link S/A	13008-02		
37	Spring	46-17		
38	Washer	1206-07		
39	Adjusting Nut	32597-02		
40	Supply Tube to Spreader	1780-07*		
41	Supply Tube to Valve	1760-07*		
42	Spreader S/A - (Parts 26, 32 thru 39)	7456-02		
43	Self-closing Valve S/A	7453-02		
44	Stop S/A - (Parts 1 thru 8)	7479-07		

* NOT AVAILABLE

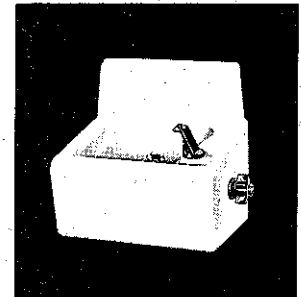
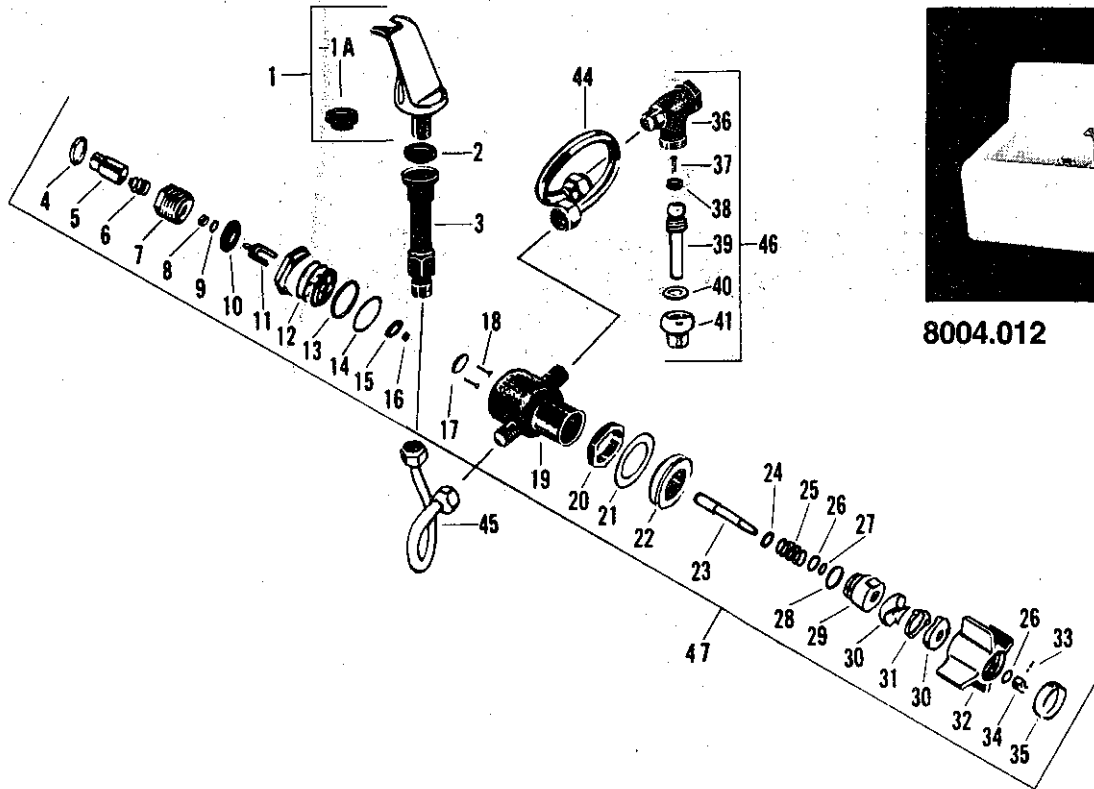
Note - Access Plate (not illustrated) - # 1376-29 for 8021.016 (R 6021)
Access Plate (not illustrated) - # 760-29 for 8022.014 (R 6022)



KISSLER & CO., INC.

AMERICAN-STANDARD Plumbing Fittings Replacement Parts

SARATOGA® Drinking Fountain—8310 parts



8004.012

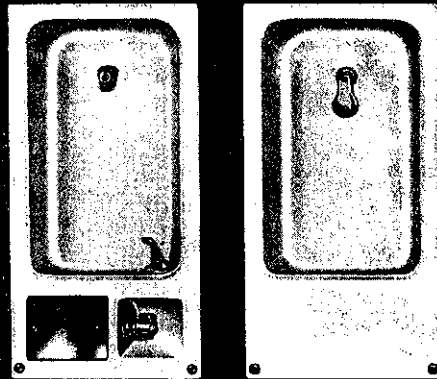
Item No.	Part No.	Description
1.	7554.02	Bubbler w/washer
1A.	58.07	Washer cup type
2.	28.17	Washer for socket
3.	34709.07	Socket
4.	187.27	Lock ring
5.	539.17	Adjusting nut
6.	1708.07	Spring
7.	1174.17	Spring chamber
8.	1115.07	Lock nut
9.	94.27	Washer
10.	152.27	Diaphragm
11.	1005.17	Yoke
12.	1101.27	Sleeve
13.	1719.07	Static seal
14.	9.27	Washer
15.	1441.37	Seat washer holder
16.	1398.27	Seat washer (valve)
17.	1440.37	Seat washer plate
18.	307.07	Screw
19.	25376.07	Valve body
20.	25045.07	Lock nut
21.	63459.09	Friction washer
22.	1198.32	Escutcheon
23.	1711.07	Stem
24.	113.17	Retaining washer
25.	1718.07	Spring

Item No.	Part No.	Description
26.	21771.07	Friction washer
27.	70575.07	'O' ring
28.	54212.07	Static seal
29.	34.22	Spring housing
30.	171.37	Cam
31.	527.17	Ball race
32.	92.22	Handle
33.	433.07	Pin
34.	1150.07	Handle nut
35.	1312.32	Handle cap
36.	34711.07*	Stop body
37.	169.07	Seat washer screw
38.	441.07	Seat washer (stop)
39.	31348.07	Stem w/washer & screw
40.	1883.07	Cap washer
41.	21436.07	Stuffing box cap
44.	1713.07	Supply tube (stop to valve)
45.	1714.07	Supply tube (valve to bubbler)
46.	7479.07	Stop S/A
Sub-assemblies		
47.	7461.02	Valve S/A—(parts 4 thru 35)
	34625.07	Sleeve S/A—(parts 8 thru 18)

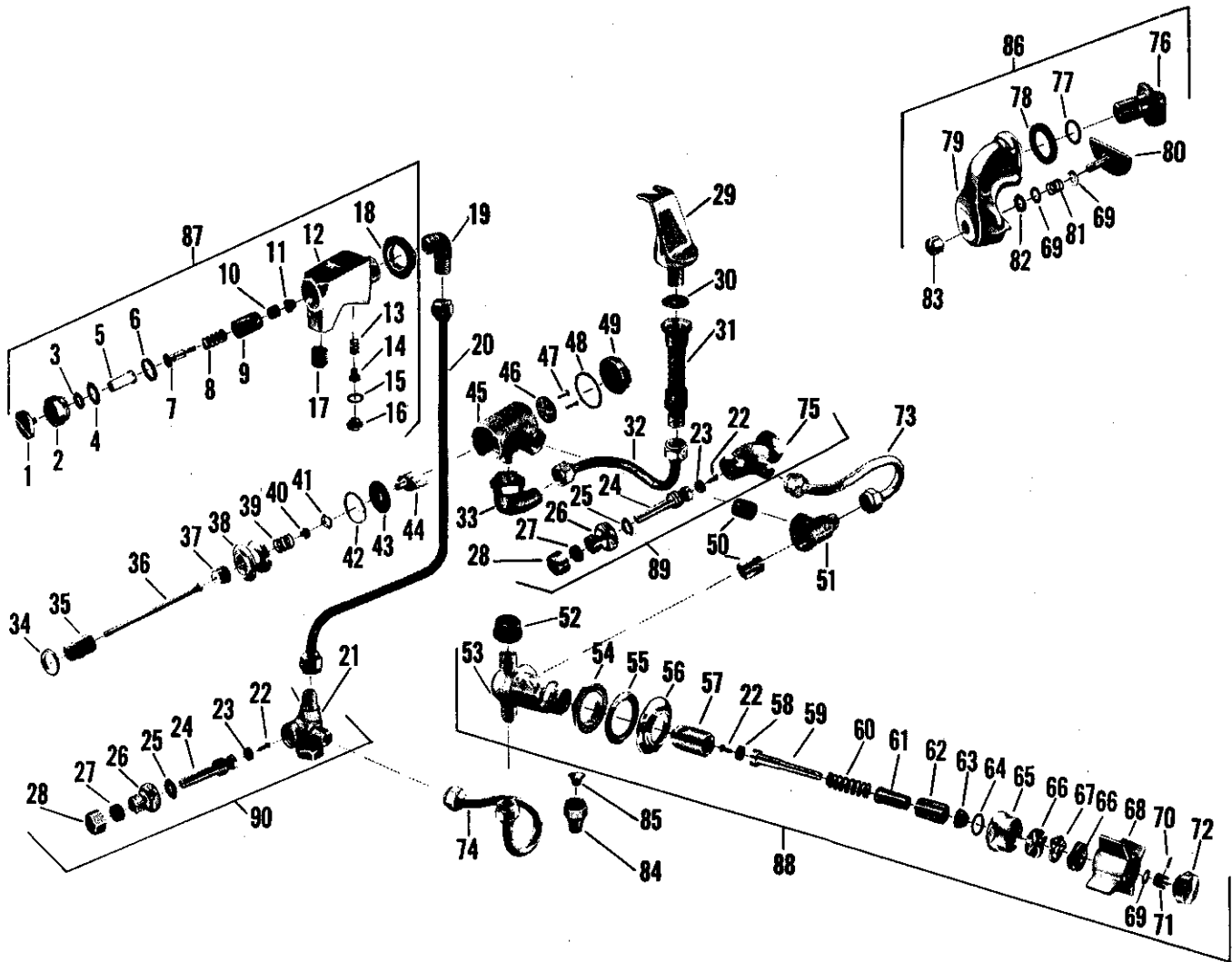
*Not available

Note—Access plate (not illustrated)—#1376.29

Order by part number



R 6032 shown on F 8565

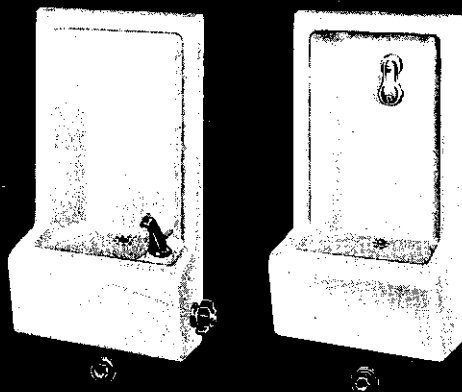


no.	description	part no.	R 6032 F 8565	R 6033 F 8566	no.	description	part no.	R 6032 F 8565	R 6033 F 8566
1	Push Button	775-32			49	Cap	40356-08		
2	Packing Nut	537-12			50	Pipe Nipple	42463-08		
3	"O" Ring	888-17			51	Supply Tee	25679-08		
4	Brass Washer	21625-08			52	Valve Body Cap	1001-27		
5	Upper Stem	1006-14			53	Valve Body	34719-04		
6	Washer	1043-07			54	Lock Nut	24526-08		
7	Lower Stem	21724-08			55	Friction Washer	20829-09		
8	Spring	33-27			56	Flange	68040-02		
9	Sleeve	21389-08			57	Sleeve	21376-08		
10	Seat Washer	53-07			58	Seat Washer	1171-27		
11	Seat Washer Holder	40219-08			59	Stem w/washer & Screw	25688-08		
12	Glass Filler Body	25378-02			60	Spring	1188-07		
13	Spring	1283-27			61	Gland	33898-08		
14	Regulating Screw	34745-08			62	Spacer	40394-08		
15	Washer	1040-17			63	Stem Packing	129-07		
16	Regulating Screw Cap	37417-02			64	Cap Washer	1044-07		
17	Stream Regulator	33995-08			65	Cap	364-12		
18	Lock Nut	24409-08			66	Cam	171-37		
19	Supply Ell (Glass Filler)	25940-08			67	Ball Race	527-17		
20	Supply Tube to Glass Filler	1754-07			68	Handle	92-22		
21	Stop Body (Fountain)	25691-08			69	Friction Washer	21771-08		
22	Seat Washer Screw	159-17			70	Pin	433-07		
23	Seat Washer	441-07			71	Handle Nut	1150-07		
24	Stem w/washer & Screw	19422-08			72	Handle Cap	1312-32		
25	Cap Washer	125-07			73	Supply Tube to Cuspidor	1758-07		
26	Stuffing Box Cap	21423-08			74	Supply Tube to			
27	Packing	1311-07				Self-closing Valve	1781-07		
28	Stuffing Nut	25015-07			75	Stop Body (Cuspidor)	37082-08		
29	Bubbler w/washer	7454-02			76	Supply Ell	25678-08		
30	Washer	28-17			77	Static Seal	27-37		
31	Socket	25680-08			78	Washer	67-07		
32	Supply Tube to Bubbler	1757-07			79	Spreader Body	25677-02		
33	Supply Ell (Pressure Regulator)	26941-08			80	Adjusting Plate w/link S/A	13008-02		
34	Lock Ring	187-27			81	Spring	46-17		
35	Adjusting Nut	967-27			82	Washer	1206-07		
36	Leak Tube	34189-08			83	Adjusting Nut	32597-02		
37	Spacer	969-27			84	Tube Nut	402-27		
38	Regulating Cap	40358-08			85	Seal Bonnet	421-47		
39	Spring	43-27			86	Spreader S/A	7456-02		
40	Yoke Lock Nut	40363-08			87	Glass Filler S/A	7581-02		
41	Brass Washer	1456-07			88	Self-closing Valve S/A	7455-02		
42	Brass Friction Ring	1455-07			89	Cuspidor Stop S/A	7459-08		
43	Diaphragm	119-07			90	Supply Stop S/A	7487-08		
44	Yoke	104-08							
45	Pressure Regulator Body	34710-08							
46	Yoke Disc	40359-08							
47	Yoke Screw	307-07							
48	Cap Washer	142-07							

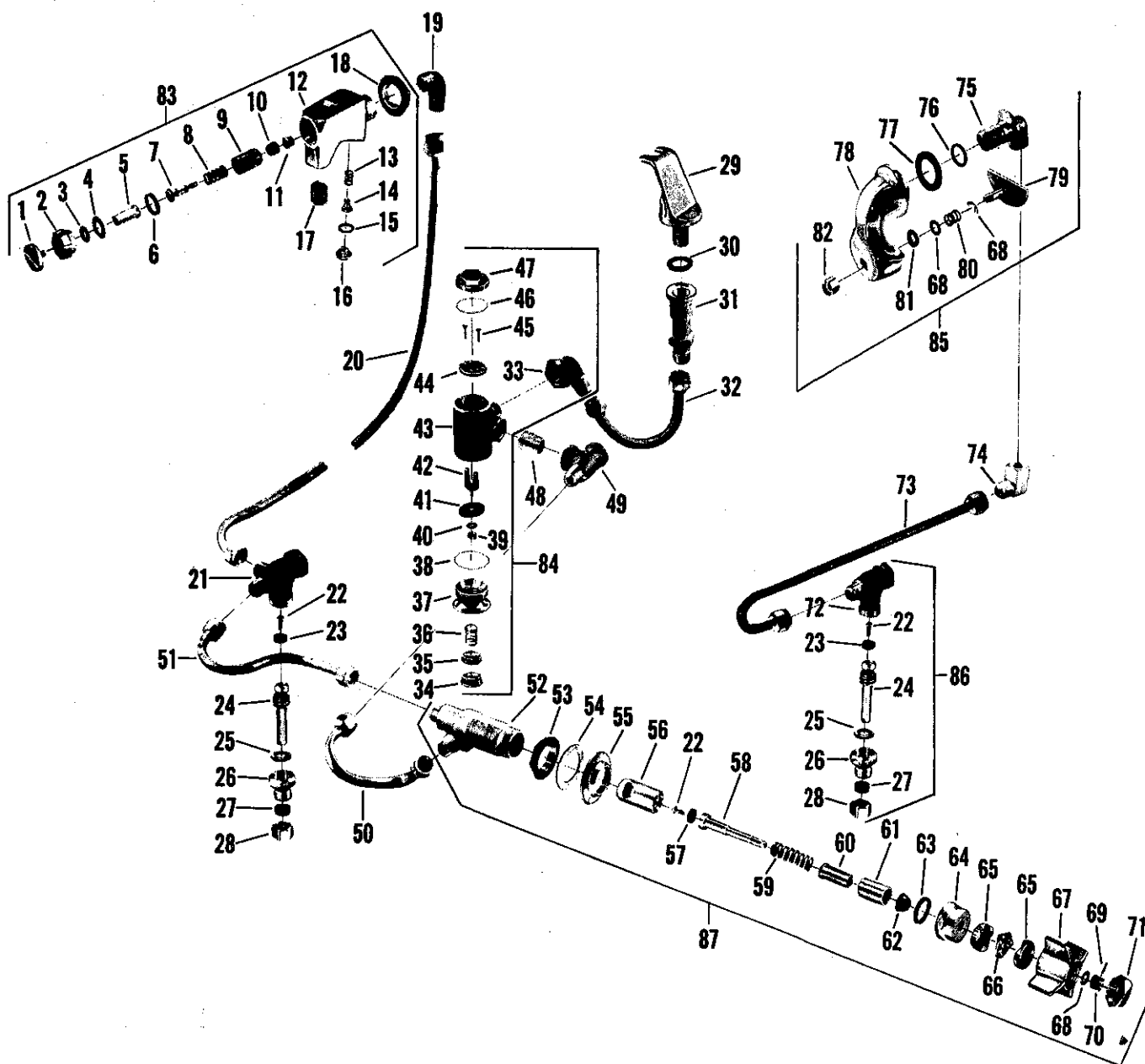
Sub-assemblies

Pressure Regulator S/A - (Parts 33 thru 49) - #7458-08

Note - Access Plate (not illustrated) - #760-29

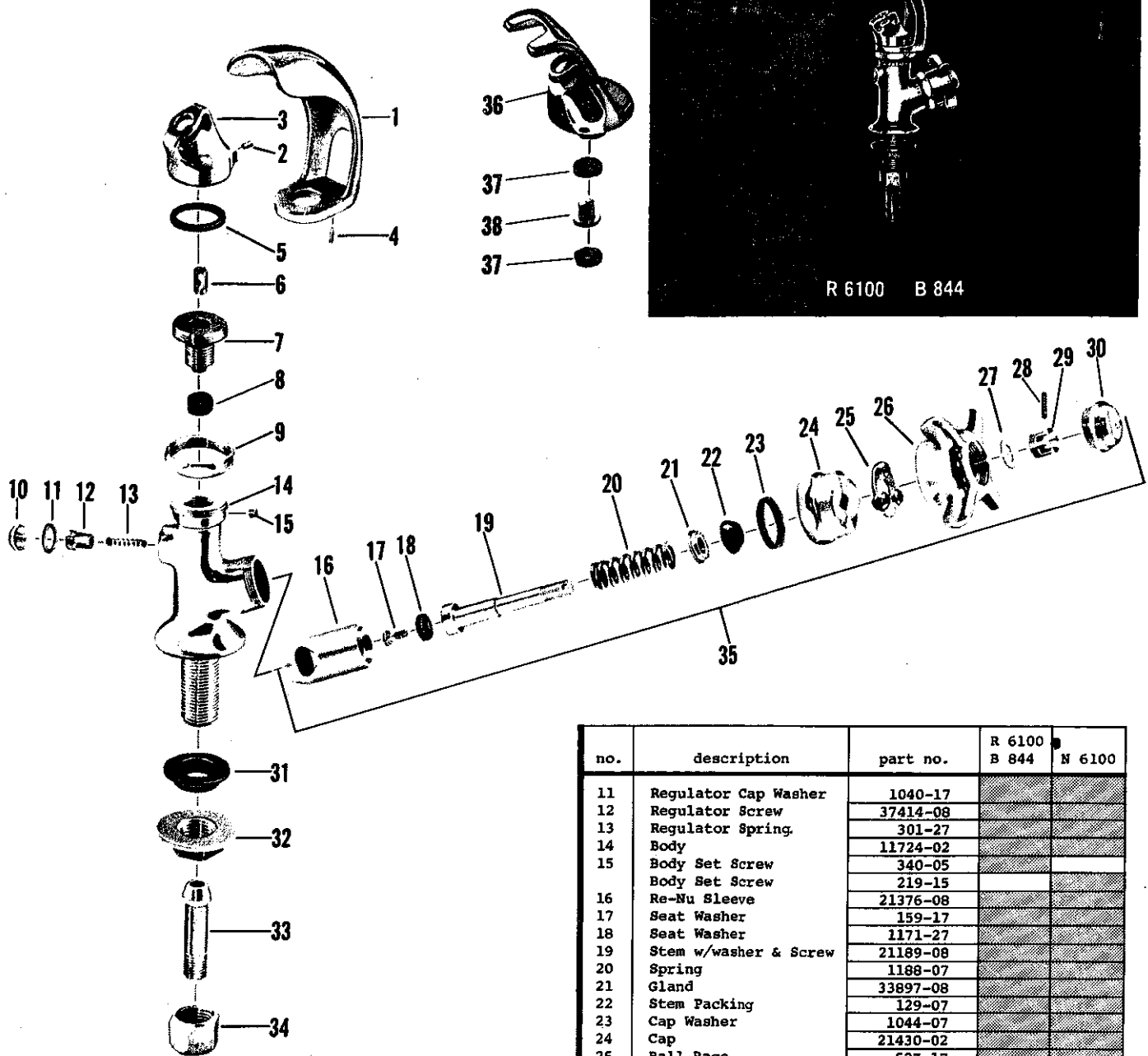


R 6031 shown on F 8575



no.	description	part no.	R 6034 F 8574	R 6031 F 8575	no.	description	part no.	R 6034 F 8574	R 6031 F 8575
1	Push Button	775-32			46	Cap Washer	142-07		
2	Packing Nut	537-12			47	Cap	40356-08		
3	"O" Ring	888-17			48	Pipe Nipple	42463-08		
4	Brass Washer	21625-08			49	Supply Tee	25679-08		
5	Upper Stem	1006-14			50	Supply Tube to Vol. Reg.			
6	Washer	1043-07				Supply Tee	1788-07		
7	Lower Stem	21724-08			51	Valve Supply Tube	1750-07		
8	Spring	33-27			52	Valve Body	25381-04		
9	Sleeve	21389-08			53	Lock Nut	24526-08		
10	Seat Washer	53-07			54	Friction Washer	20829-09		
11	Seat Washer Holder	40219-08			55	Flange	68040-02		
12	Body (Glass Filler)	25378-02			56	Sleeve	21376-08		
13	Spring	1283-27			57	Seat Washer	1171-27		
14	Regulating Screw	34745-08			58	Stem w/washer & Screw	25688-08		
15	Washer	1040-17			59	Spring	1188-07		
16	Regulating Screw Cap	37417-02			60	Gland	33898-08		
17	Stream Regulator	33995-08			61	Spacer	40394-08		
18	Lock Nut	24409-08			62	Stem Packing	129-07		
19	Supply Ell	25940-08			63	Cap Washer	1044-07		
20	Supply Tube to Glass Filler	1754-07			64	Cap	364-12		
21	Stop Body (Fountain)	25377-08			65	Cam	171-37		
22	Seat Washer Screw	159-17			66	Ball Race	527-17		
23	Seat Washer	441-07			67	Handle	92-22		
24	Stem w/washer & Screw	19422-08			68	Friction Washer	21771-08		
25	Cap Washer	125-07			69	Pin	433-07		
26	Stuffing Box Cap	21423-08			70	Handle Nut	1150-07		
27	Packing	1311-07			71	Handle Cap	1312-32		
28	Stuffing Nut	25015-07			72	Stop Body (Cuspidor)	34711-08		
29	Bubbler w/washer	7454-02			73	Supply Tube to Spreader	1790-07		
30	Washer	28-17			74	Adapter Elbow,	1782-07		
31	Socket	25680-08			75	Supply Ell for Spreader	25678-08		
32	Supply Tube to Bubbler From Regulator	1787-07			76	Static Seal	27-37		
33	Adapter Ell	26941-08			77	Washer	67-07		
34	Screw Cap	40200-08			78	Spreader Body	25677-02		
35	Regulating Screw	40320-08			79	Adjusting Plate w/link S/A	13008-02		
36	Spring	43-27			80	Spring	46-17		
37	Regulating Cap	40358-08			81	Washer	1206-07		
38	Friction Ring	1455-07			82	Adjusting Nut	32597-02		
39	Yoke Lock Nut	40363-08			83	Glass Filler S/A	7581-02		
40	Brass Washer	1456-07			84	Volume Regulator S/A	7477-08		
41	Diaphragm	119-07			85	Spreader S/A	7456-02		
42	Yoke	104-08			86	Stop S/A - Cuspidor	7479-08		
43	Volume Regulator Body	34710-08				Stop S/A - Fountain (Parts 21 thru 28)	7467-08		
44	Yoke Disc	40359-08			87	Self-closing Valve S/A	7453-02		
45	Screw	307-07							

Note - Access Plate for Fountain or Cuspidor - #1376-29
(not illustrated)



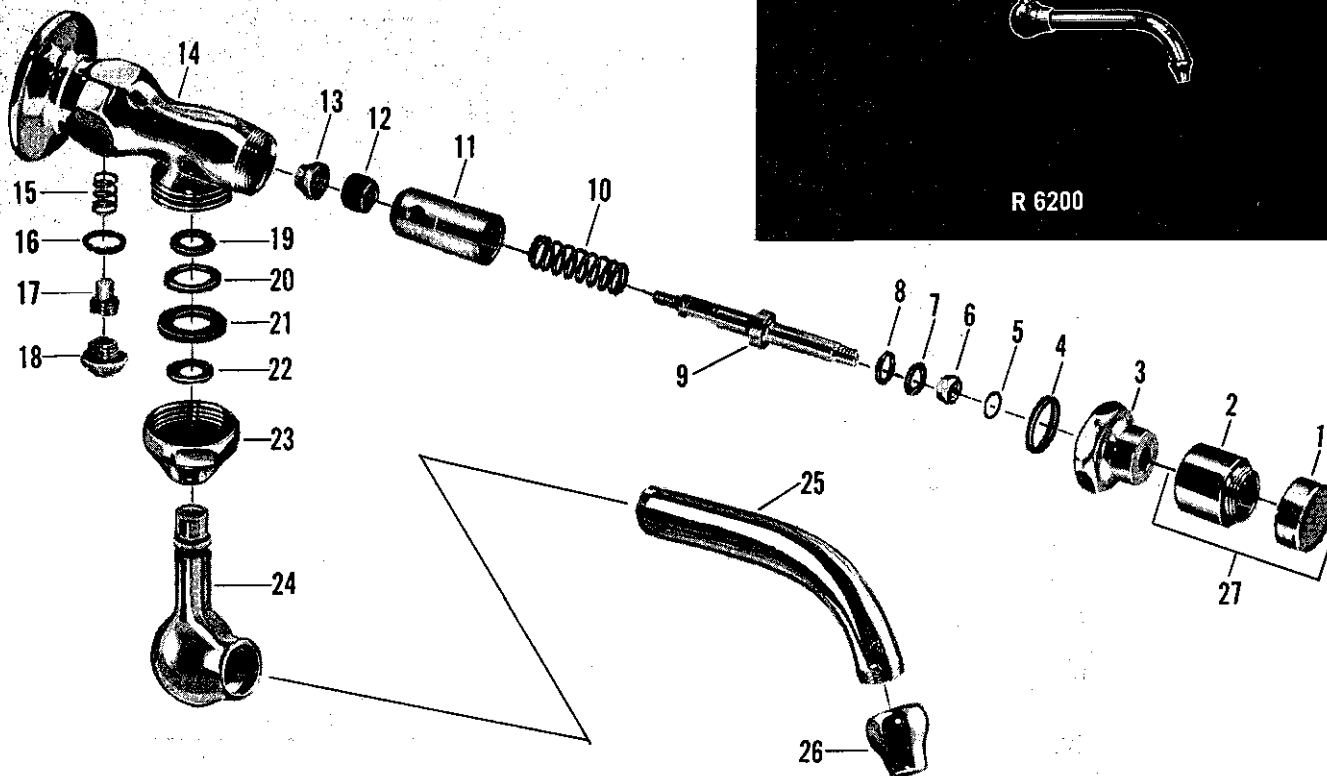
no.	description	part no.	R 6100 B 844	N 6100
1	Bubbler Guard	34715-02		
2	Set Screw for Bubbler	219-15		
3	Bubbler	34713-02		
4	Pin for Bubbler Guard	34716-08		
5	Bubbler Washer	487-07		
6	Jet	34761-08		
7	Spud for Bubbler	335-37		
8	Washer	141-17		
9	Lock Nut	40326-02		
10	Regulator Cap	37417-02		

no.	description	part no.	R 6100 B 844	N 6100
11	Regulator Cap Washer	1040-17		
12	Regulator Screw	37414-08		
13	Regulator Spring	301-27		
14	Body	11724-02		
15	Body Set Screw	340-05		
16	Body Set Screw	219-15		
17	Re-Nu Sleeve	21376-08		
18	Seat Washer	159-17		
19	Seat Washer	1171-27		
20	Stem w/washer & Screw	21189-08		
21	Spring	1188-07		
22	Gland	33897-08		
23	Stem Packing	129-07		
24	Cap Washer	1044-07		
25	Cap	21430-02		
26	Ball Race	527-17		
27	Handle	23437-02		
28	Friction Washer	21771-08		
29	Pin	433-07		
30	Handle Nut	1150-07		
31	Handle Cap	23098-02		
32	Shank Washer	1434-07		
33	Lock Nut	24530-08		
34	Coupling	95-15		
35	Coupling Nut	24220-05		
36	Re-Nu Unit Assembly-Specify Plain	9101-02		
37	Bubbler	1702-12		
38	Jet Washer	531-37		
	Jet	39764-08		

Push Button Glass Filler

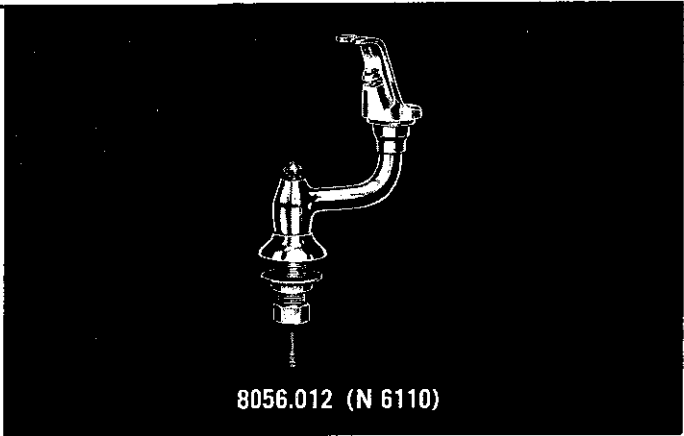
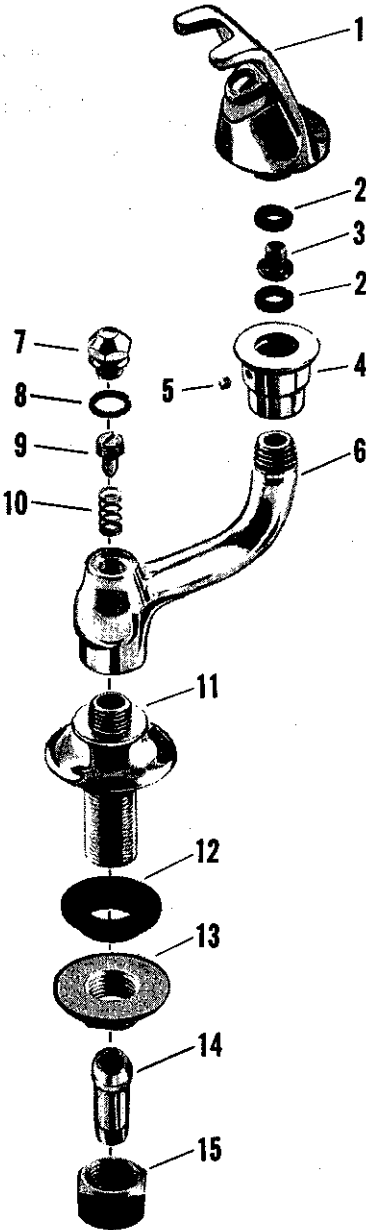
Self-Closing

KISSLER & CO., INC.



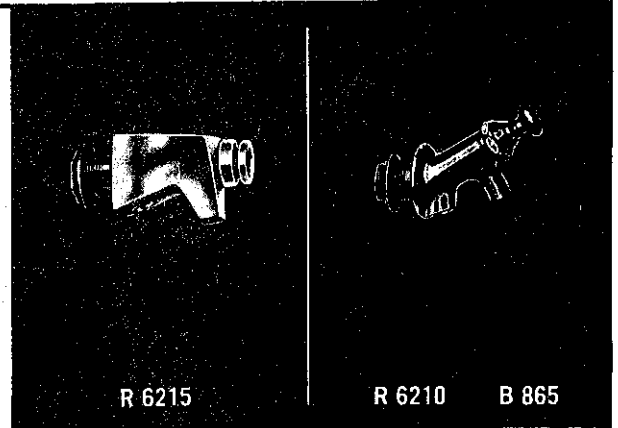
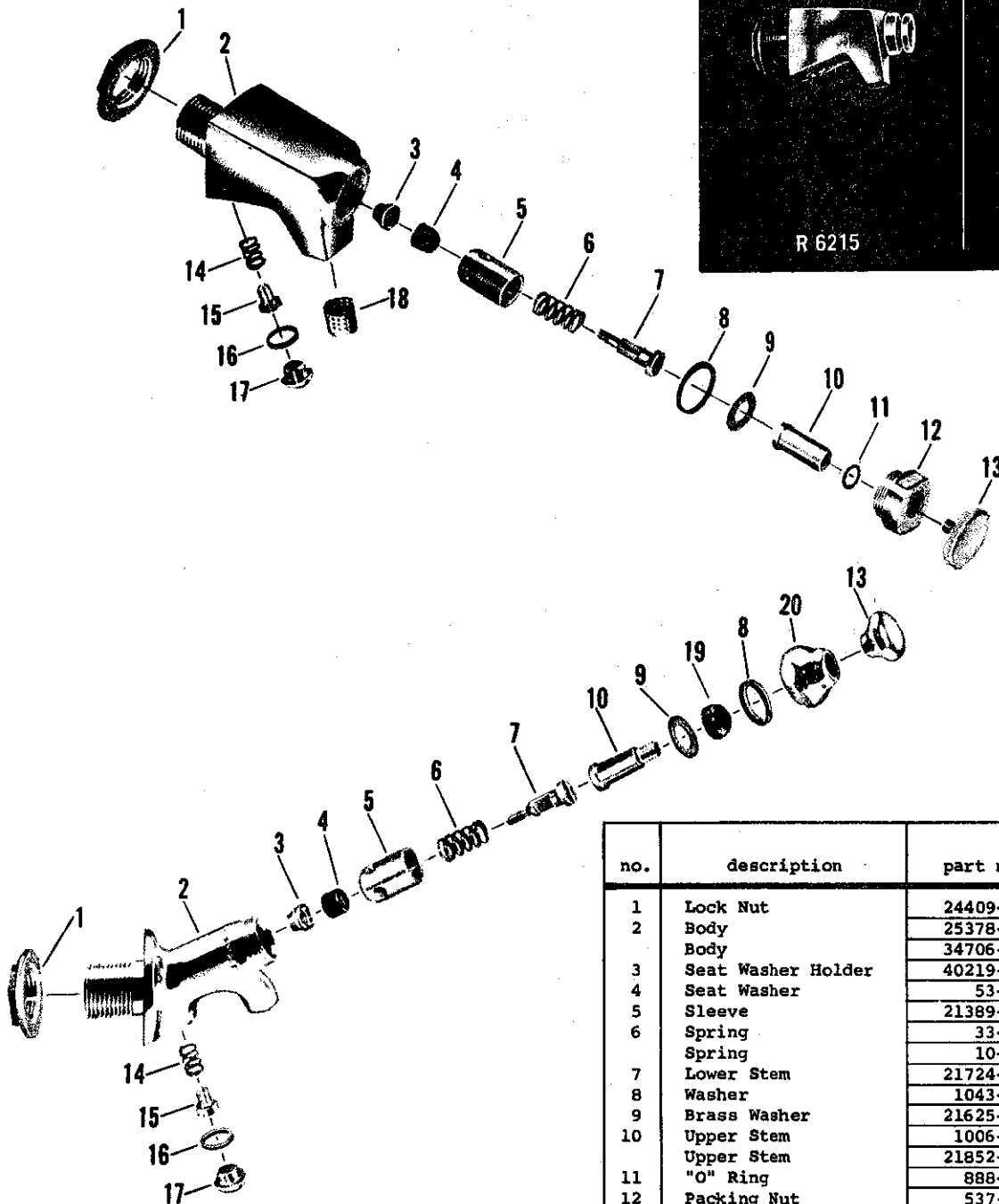
no.	description	part no.	R 6200
1	Metal Index - Plain	20844-02*	
2	Index Spud	36260-02*	
3	Cap	25455-02	
4	Cap Washer	1043-07	
5	"O" Ring	1317-37	
6	Stem Nut	36261-07	
7	Lock Washer	358-29	
8	Brass Washer	1140-37	
9	Stem w/pin	8108-07*	
10	Spring	24-37	
11	Re-Nu Sleeve	20655-07	
12	Seat Washer	53-07	
13	Seat Washer Holder	40219-07	
14	Body	92230-02*	
15	Spring	1283-27	
16	Regulating Cap Washer	1040-17	
17	Regulating Screw	34745-07	
18	Regulating Cap	37417-02	
19	Brass Ring	21559-07	
20	Brass Washer	21824-07*	
21	Asbestos Washer	1323-07*	
22	Packing	1311-07	
23	Spout Ell Cap	19117-02	
24	Spout Ell	40304-02*	
25	5/8" x 4 1/4" Tube	41878-02*	
26	Spout Tip	20666-02*	
27	Spud & Index S/A - Plain	9233-024	

* NOT AVAILABLE

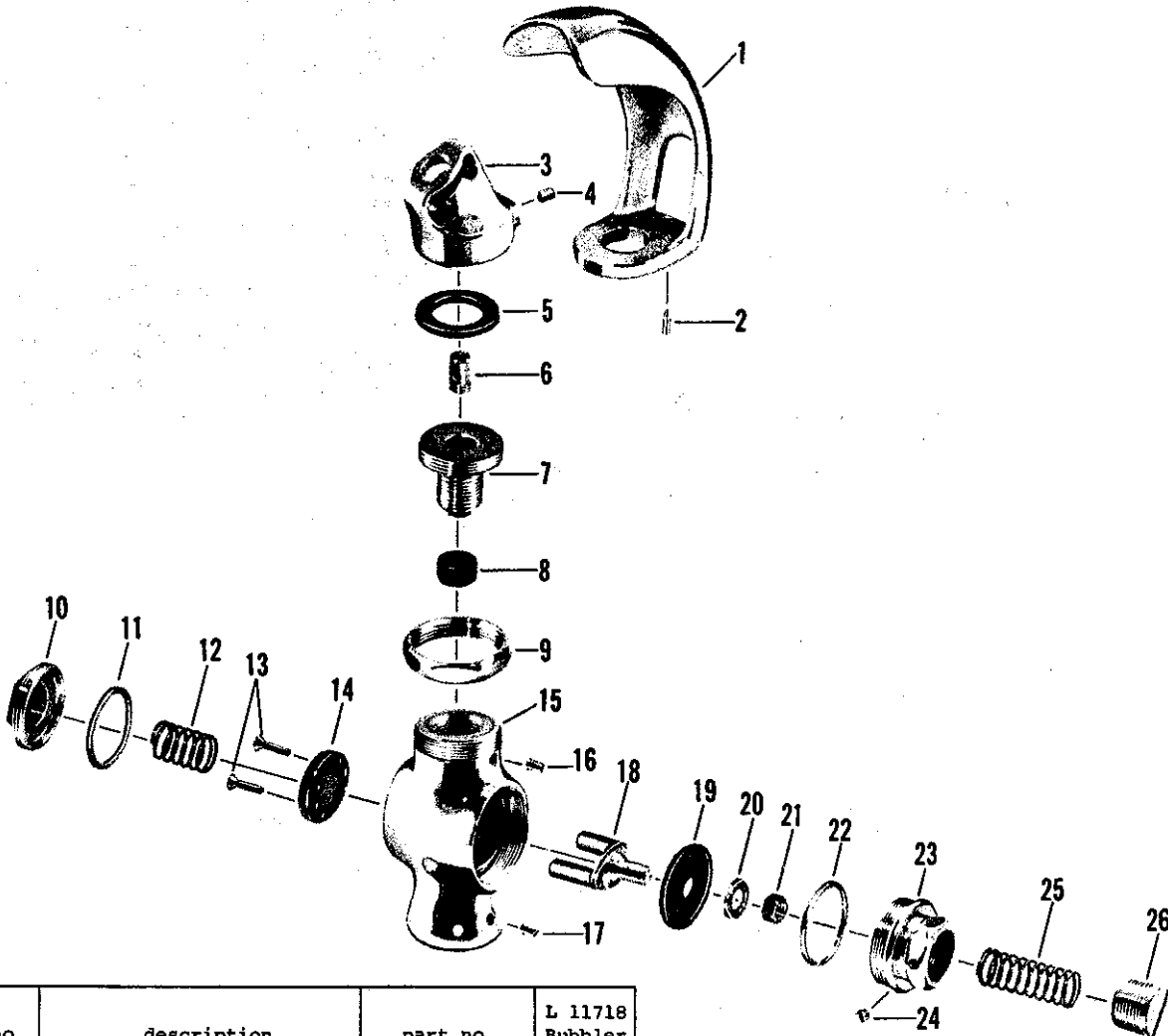


no.	description	part no.	N 6110
1	Bubbler	1702-12	
2	Bubbler Washer	531-37	
3	Jet	39764-07	
4	Socket	34723-02	
5	Bubbler Set Screw	219-15	
6	Body	34726-02	
7	Regulating Cap Nut	34724-02	
8	Cap Washer	1040-17	
9	Regulating Screw	34722-07	
10	Spring	156-17	
11	Shank	40314-02	
12	Shank Washer	530-17	
13	Lock Nut	24530-07	
14	Swivel	95-15*	
15	Coupling Nut	24220-05	

● NOT AVAILABLE



no.	description	part no.	R 6215	R 6210 B 865
1	Lock Nut	24409-08		
2	Body	25378-02		
	Body	34706-02		
3	Seat Washer Holder	40219-08		
4	Seat Washer	53-07		
5	Sleeve	21389-08		
6	Spring	33-27		
	Spring	10-27		
7	Lower Stem	21724-08		
8	Washer	1043-07		
9	Brass Washer	21625-08		
10	Upper Stem	1006-14		
	Upper Stem	21852-05		
11	"O" Ring	888-17		
12	Packing Nut	537-12		
13	Push Button	775-32		
	Push Button	34707-02		
14	Regulating Spring	1283-27		
15	Regulating Screw	34745-08		
16	Washer	1040-17		
17	Regulating Screw Cap	37417-02		
18	Stream Regulator	33995-08		
19	Stem Packing	129-07		
20	Cap	21436-02		



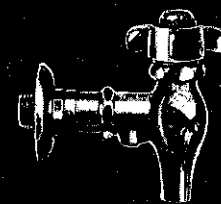
no.	Description	part no.	L 11718 Bubbler
1	Bubbler Guard	34715-02	
2	Pin for Bubbler Guard	34716-08	
3	Bubbler	34713-02	
4	Set Screw for Bubbler	219-15	
5	Bubbler Washer	487-07	
6	Jet	34761-08	
7	Spud for Bubbler	335-37	
8	Washer	141-17	
9	Lock Nut	40326-02	
10	Cap	40356-02	
11	Cap Washer	142-07	
12	Spring	43-27	
13	Yoke Screw	307-07	
14	Yoke Disc	40359-08	
15	Body	34735-02	
16	Set Screw	340-05	
17	Set Screw	1165-05	
18	Yoke	104-08	
19	Diaphragm	119-07	
20	Brass Washer	1456-07	
21	Yoke Lock Nut	40363-08	
22	Brass Friction Ring	1455-07	
23	Regulator Cap	40117-02	
24	Regulator Cap Set Screw	1164-05	
25	Regulator Spring	13-27	
26	Regulating Screw	40118-02	

Note - Furnished completely assembled under part #11718-02

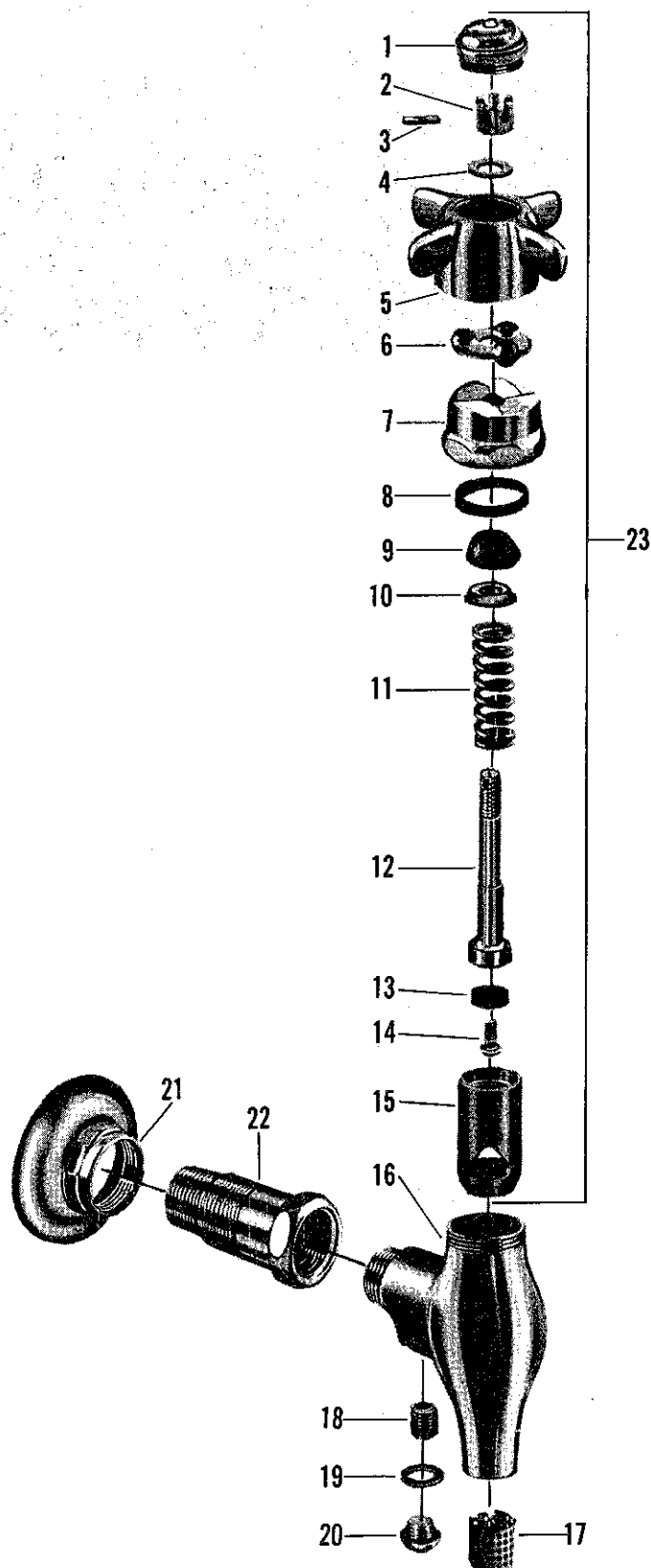
Glass Filler

Self-Closing—RE-NU

KISSLER & CO., INC.

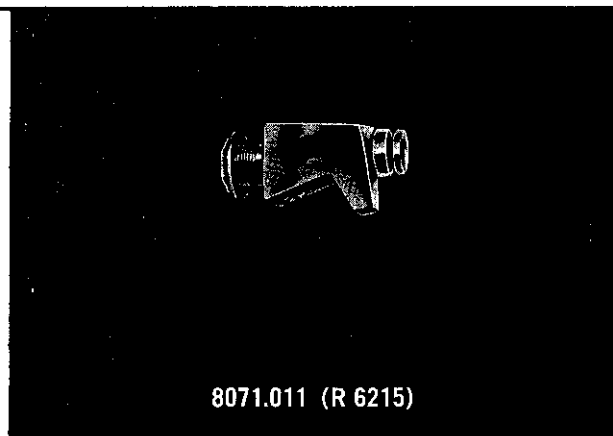
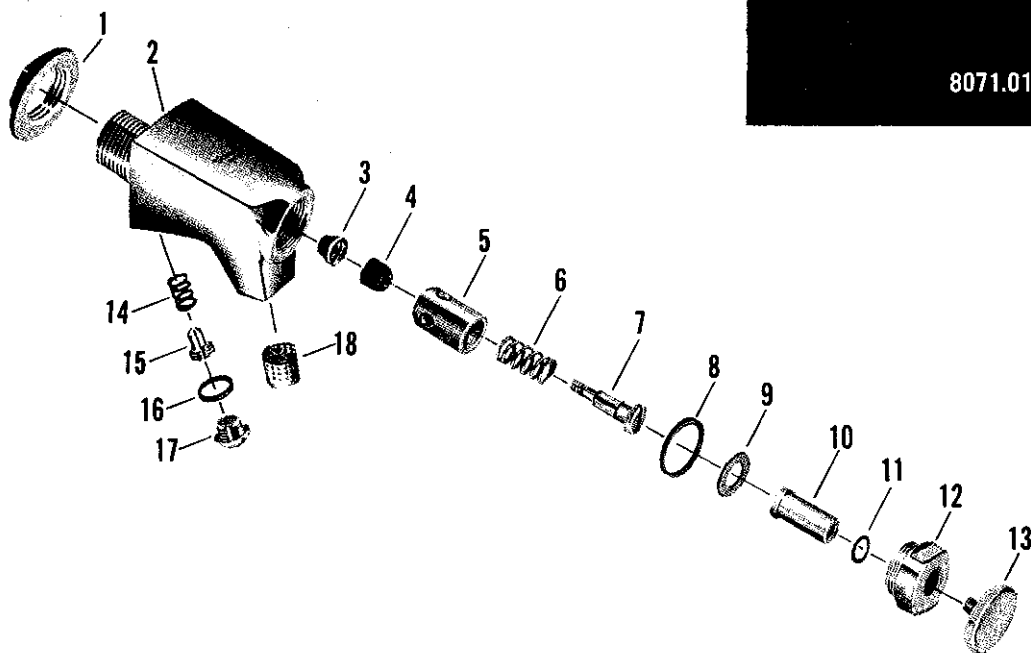


R 6220



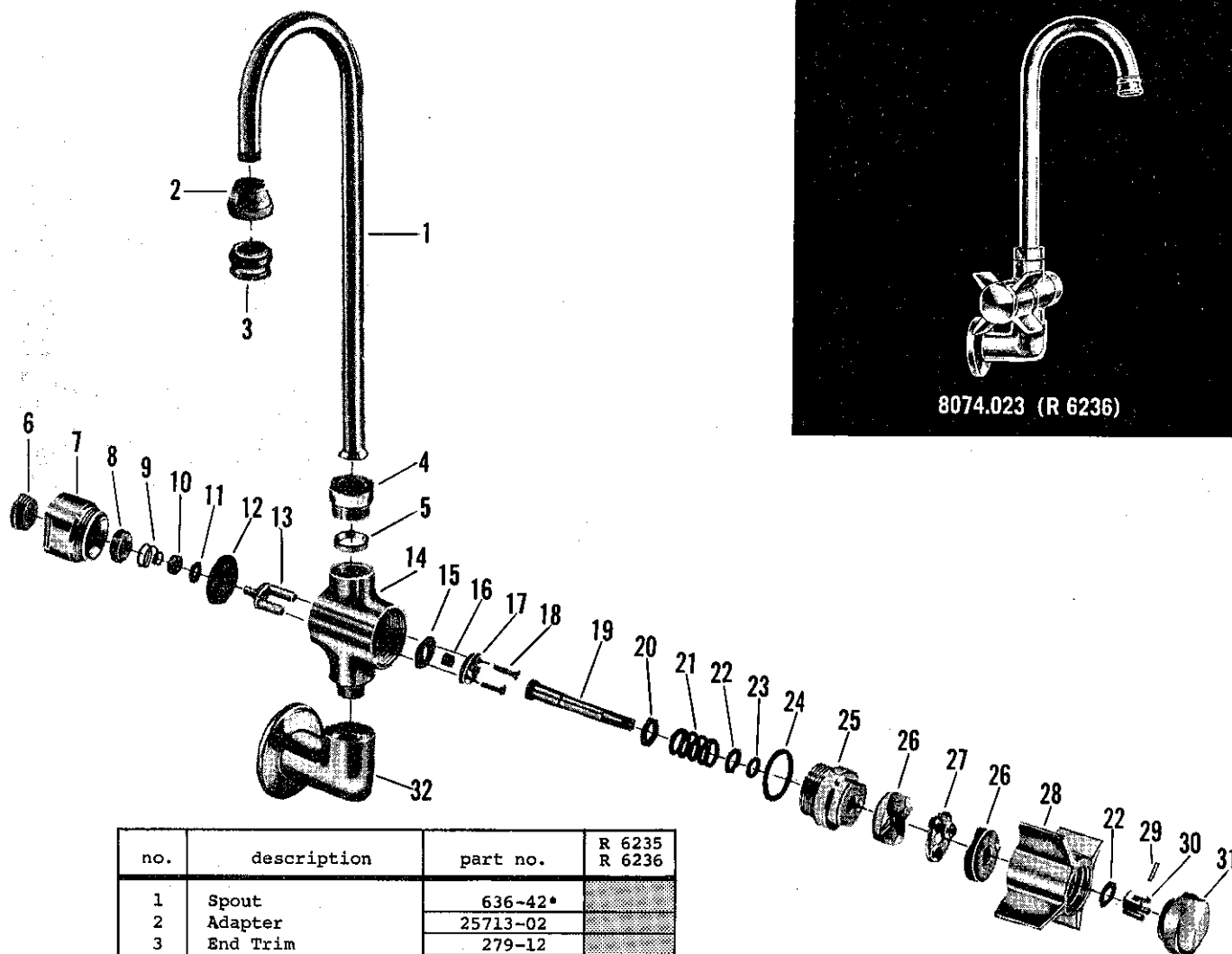
no.	description	part no.	R 6220
1	Handle Cap	23098-02	
2	Stem Nut	1150-07	
3	Pin	433-07	
4	Brass Washer	21771-07	
5	Handle	23437-02	
6	Ball Race	527-17	
7	Cap	21430-02	
8	Cap Washer	1044-07	
9	Stem Packing	129-07	
10	Packing Gland	33897-07	
11	Spring	1188-07	
12	Stem w/washer & Screw	63374-07	
13	Seat Washer	1171-27	
14	Seat Washer Screw	169-07	
15	Re-Nu Sleeve	21376-07	
16	Body & Bushing	11725-02*	
17	Stream Regulator	33995-07	
18	Regulating Screw	40288-07*	
19	Washer	1325-07	
20	Regulating Cap	40245-02	
21	Flange	609-22	
22	Shank	20466-02*	
23	Re-Nu Unit - Plain	9101-024	

● NOT AVAILABLE



no.	description	part no.	R 6215
1	Lock Nut	24409-07	
2	Body	25378-02*	
3	Seat Washer Holder	40219-07	
4	Seat Washer	53-07	
5	Sleeve	21389-07	
6	Spring	33-27	
7	Lower Stem	21724-07	
8	Washer	1043-07	
9	Brass Washer	21625-07	
10	Upper Stem	1006-14	
11	"O" Ring	888-17	
12	Packing Nut	537-12	
13	Push Button	775-32	
14	Regulating Spring	1283-27	
15	Regulating Screw	34745-07	
16	Washer	1040-17	
17	Regulating Screw Cap	37417-02	
18	Stream Regulator	33995-07	

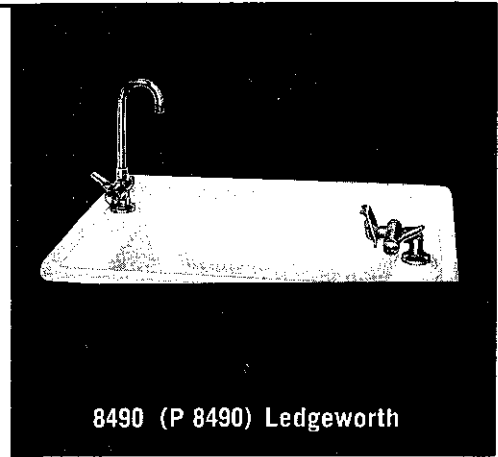
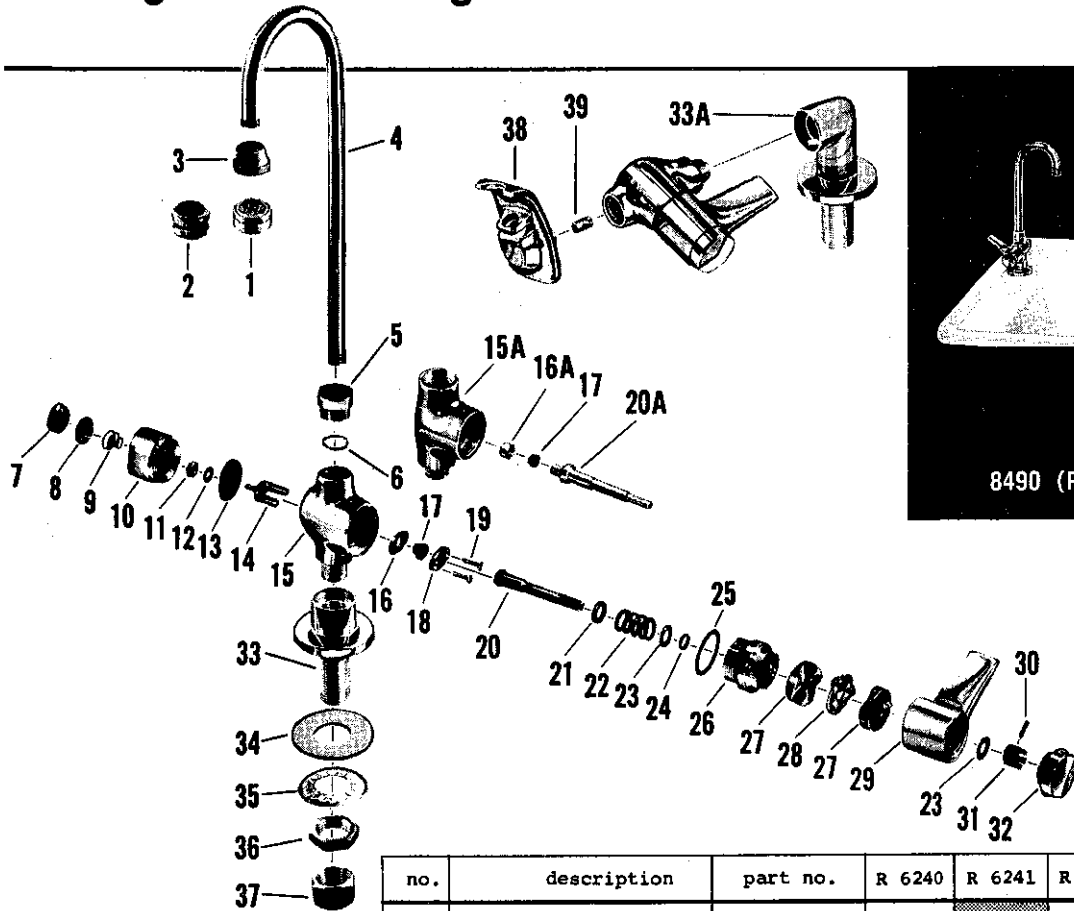
* NOT AVAILABLE



no.	description	part no.	R 6235 R 6236
1	Spout	636-42*	
2	Adapter	25713-02	
3	End Trim	279-12	
4	Lock Nut	671-42*	
5	Gland	675-47*	
6	Cap Screw	1706-02	
7	Spring Chamber	1707-02	
8	Adjusting Screw	1709-07	
9	Regulating Spring	1784-07	
10	Nut	1115-07	
11	Washer	94-27	
12	Diaphragm	152-27	
13	Yoke	1005-17	
14	Body	25389-02	
15	Seat Washer Strip	1441-37	
16	Seat Washer	1398-27	
17	Seat Washer Plate	1440-37	
18	Screw	307-07	
19	Stem	1710-07	
20	Retaining Washer	113-17	
21	Spring	1718-07	
22	Friction Washer	21771-07	
23	"O" Ring	70575-07	
24	Static Seal	507-37	
25	Spring Housing	519-22	
26	Cam	171-37	
27	Ball Race	527-17	
28	Handle	92-22	
29	Pin	433-07	
30	Stem Nut	1150-07	
31	Cap	1312-32	
32	Elbow Escutcheon	25142-02*	

* NOT AVAILABLE

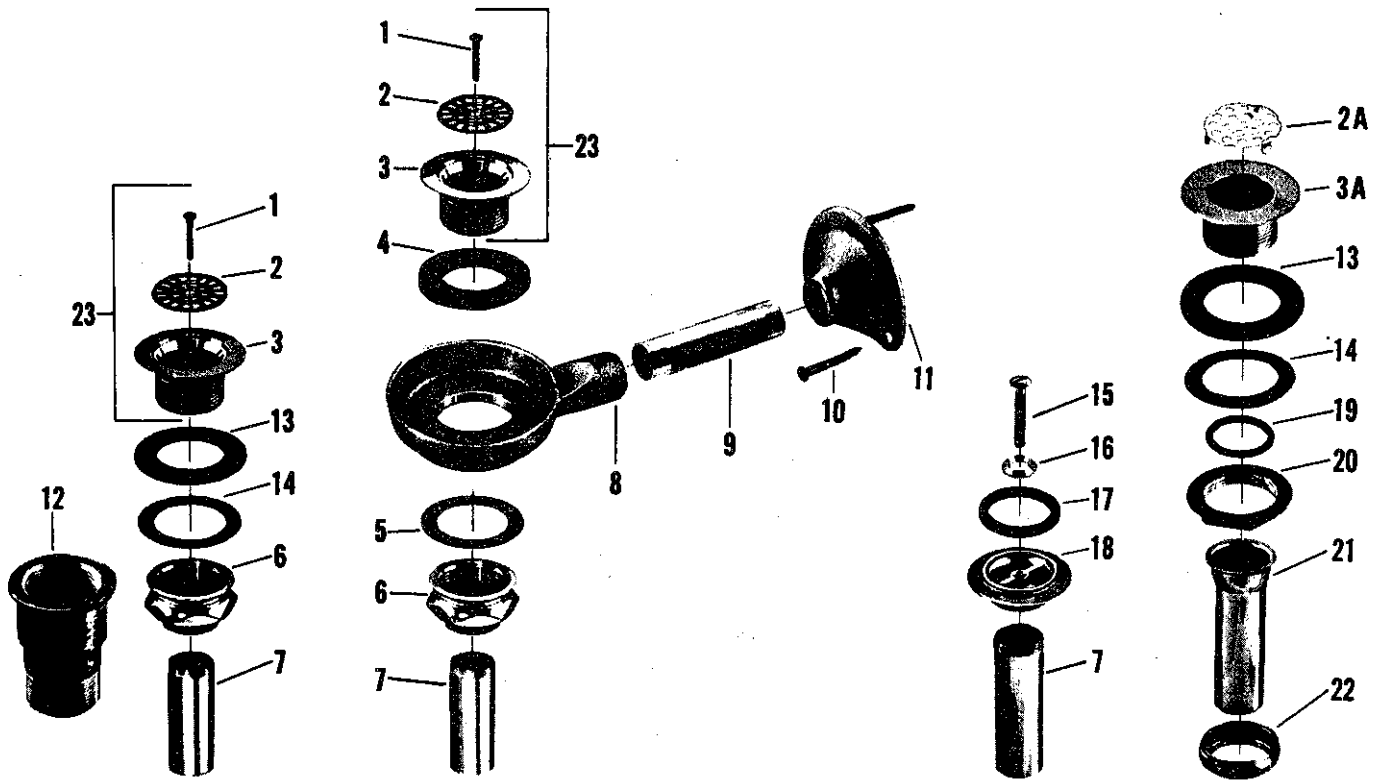
Note - For 8074-023 (R 6236) omit End Trim
& add Aerator Part # 56135-02



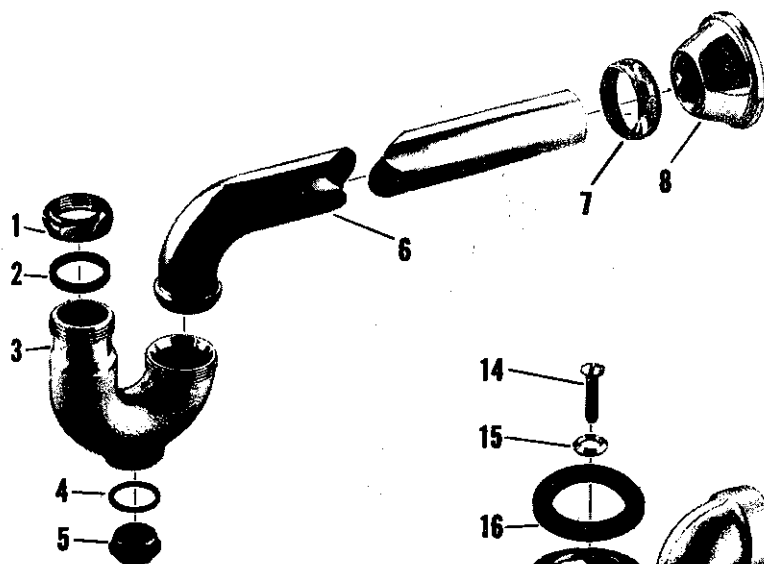
8490 (P 8490) Ledge worth

no.	description	part no.	R 6240	R 6241	R 6250	R 6251	R 6120
1	Aerator	56135-02					
2	End Trim	279-12					
3	Adapter	25714-02					
4	Gooseneck	699-22					
5	Gooseneck Lock Nut	1717-02					
6	Lock Nut Washer	1704-07					
7	Regulating Cap Screw	1706-02					
8	Regulating Screw	1709-07					
9	Spring	1784-07					
10	Spring Chamber	1707-02					
11	Nut	1115-07					
12	Washer	94-27					
13	Diaphragm	152-27					
14	Yoke	1005-17					
15	Body	25379-02					
15A	Body	25380-02					
16	Seat Washer Holder	1441-37					
16A	Seat Washer Holder	1745-07					
17	Seat Washer	1398-27					
18	Seat Washer Plate	1440-37					
19	Screw	307-07					
20	Stem	1710-07					
20A	Stem	25687-07					
21	Retaining Washer	113-17					
22	Spring	1718-07					
23	Friction Washer	21771-07					
24	"O" Ring	70575-07					
25	Static Seal	507-37					
26	Spring Housing	519-22					
27	Cam	171-37					
28	Ball Race	527-17					
29	Handle	518-22					
30	Pin	433-07					
31	Handle Nut	1150-07					
32	Handle Cap	1312-32					
33	Shank	25445-02					
33A	Shank	1746-12					
34	Shank Washer	530-17					
35	Friction Washer	54538-09					
36	Lock Nut	300-27					
37	Coupling Nut	24220-07					
38	Bubbler	1703-02					
39	Jet	1705-07					

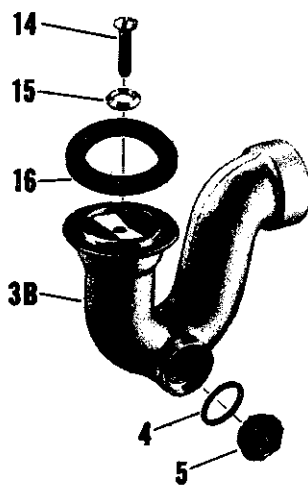
KISSLER & Strainers and Outlet Connections for Drinking Fountains CO., INC.



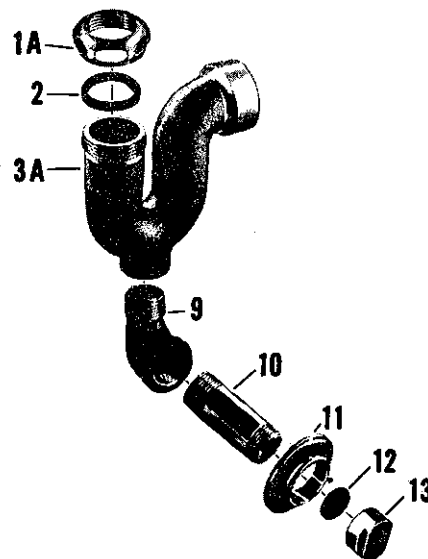
no.	description	part no.	R 6690	R 6691 E	R 6691 V	R 6692 E1	R 6692 E2	R 6692 V1	R 6693-5	R 6693-8	R 6694-21R	6694-31	R 4546
1	Screw for Strainer	1116-01											
2	Strainer	28072-02											
2A	Strainer	28073-02											
3	Plug	28249-02											
	Plug	28170-02											
	Plug	28230-02											
3A	Plug	28096-02											
4	Bowl Support Washer	425-07											
5	Rubber Washer	26-07											
6	Socket	28043-04											
7	Tailpiece - 3 3/4" Long	39147-04											
	Tailpiece - 5 1/2" Long	39113-04											
	Tailpiece - 5" Long	39134-08											
	Tailpiece - 8" Long	25133-08											
8	Bowl Support	40050-04											
9	Extension Tube	39044-04											
10	Wall Screw	1248-01											
11	Wall Flange	31713-04											
12	Extension Piece	40116-08											
13	Rubber Washer	37-17											
14	Friction Washer	20645-09											
	Friction Washer	20838-09											
15	Bolt	1722-02											
16	Bolt Washer	765-32											
17	Rubber Washer	773-37											
18	Outlet Flange	771-34											
	Outlet Flange	771-32											
19	Coupling Washer	5-07											
20	Lock Nut	24449-08											
21	Tailpiece - 4" Flared	24032-02											
22	Coupling Nut	628-12											
23	Plug & Strainer S/A (Parts 1-2-3)	7449-02											
	Plug & Strainer S/A (Parts 1-2-3)	15056-02											
	Plug & Strainer S/A (Parts 1-2-3)	7448-02											



R 7005-44

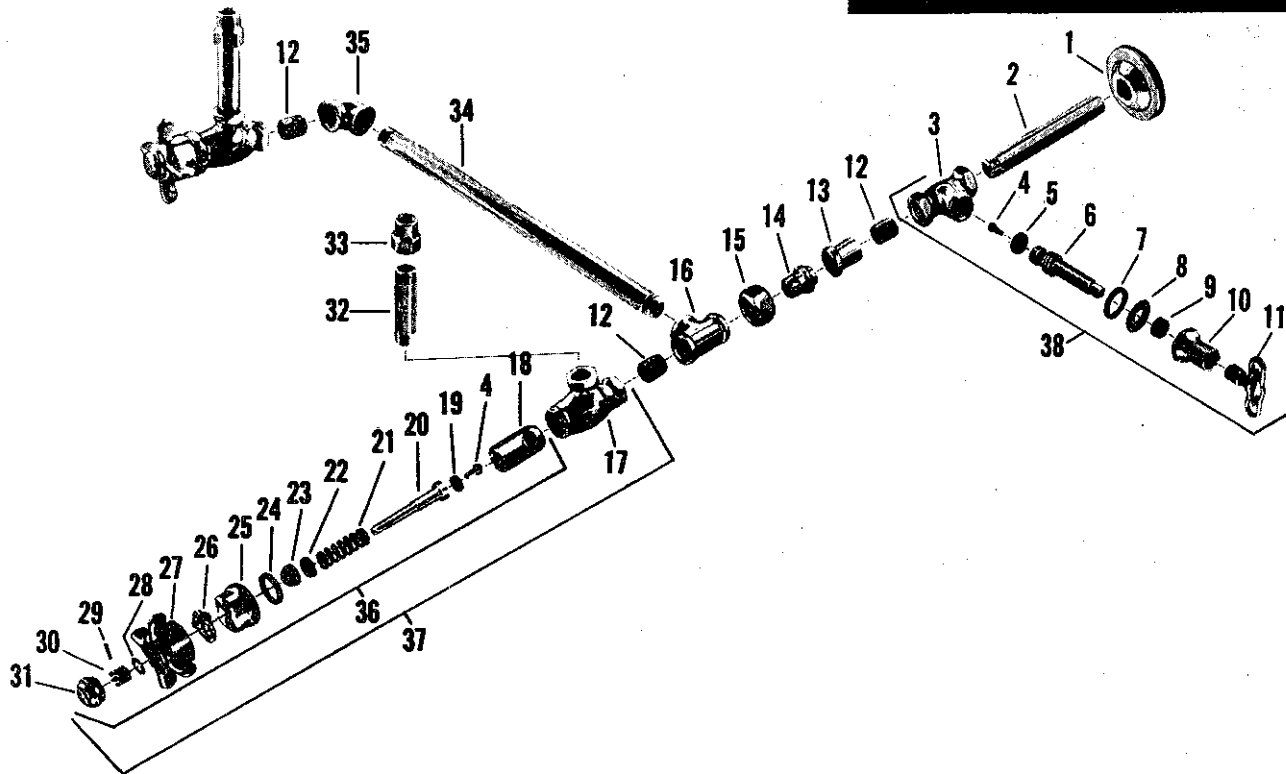
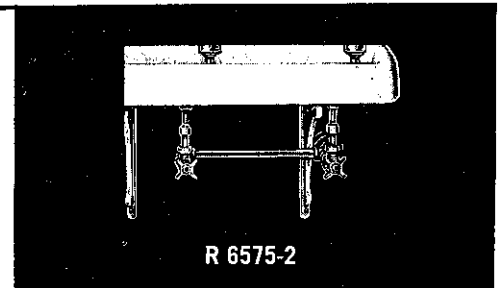


R 7060-44



R 7065-44

no.	description	part no.	R 7005-44	R 7005-45	R 7060-44	R 7060-45	R 7065-44	R 7065-45	R 7066-44	R 7066-45
1	Slip Joint Nut	634-22								
1A	Slip Joint Nut	35355-08								
2	Slip Joint Washer	468-07								
3	Body	35613-04								
	Body	35671-04								
3A	Body	35702-08								
	Body	35708-08								
3B	Body	25349-04								
	Body	25348-04								
4	Washer for Cleanout Plug	16-27								
5	Cleanout Plug	35760-05								
6	Tubular Outlet	8729-02								
	Tubular Outlet	8730-02								
7	Slip Joint Nut	634-22								
	Slip Joint Nut	628-12								
8	Wall Escutcheon	806-12								
	Wall Escutcheon	805-12								
9	Ell	1474-07								
10	Extension	25695-04								
	Extension	25696-04								
11	Flange with Set Screw	31202-02								
12	Cap Washer	1747-07								
13	Cap	25675-02								
14	Bolt	1722-02								
15	Bolt Washer	765-32								
16	Rubber Washer	1741-07								



no.	description	part no.	R 6575-2	no.	description	part no.	R 6575-2
1	Wall Escutcheon	751-12		20	Stem w/washer & Screw	21189-08	
2	Wall Pipe	42493-04		21	Spring	1188-07	
3	Stop Body	92192-02		22	Gland	33897-08	
4	Seat Washer Screw	159-17		23	Stem Packing	129-07	
5	Seat Washer	441-07		24	Cap Washer	1044-07	
6	Stem w/washer & Screw	21192-05		25	Cap	21430-02	
7	Washer	125-07		26	Ball Race	527-17	
8	Brass Washer	21625-08		27	Handle	23437-02	
9	Packing	1311-07		28	Washer	21771-08	
10	Cap	21424-02		29	Pin	433-07	
11	Key	1187-09		30	Handle Nut	1150-07	
12	3/8" S.P.S. Close Nipple	41222-08		31	Handle Cap	23098-02	
13	Female Union Part	24840-02		32	Riser Pipe	41003-04	
14	Male Union Part	23968-04		33	Reducing Coupling	27673-02	
15	Union Nut	24253-02		34	Connecting Pipe	42489-04	
16	3/8" S.P.S. Tee	1478-02		35	3/8" S.P.S. 90° Ell	1466-02	
17	3/8" Re-Nu Angle Stop Body	19981-02		36	Self-closing Unit - Specify Plain	9101-02	
18	Re-Nu Sleeve	21376-08		37	Self-closing Stop S/A	4137-02	
19	Seat Washer	1171-27		38	Loose Key Stop S/A	2500-02	

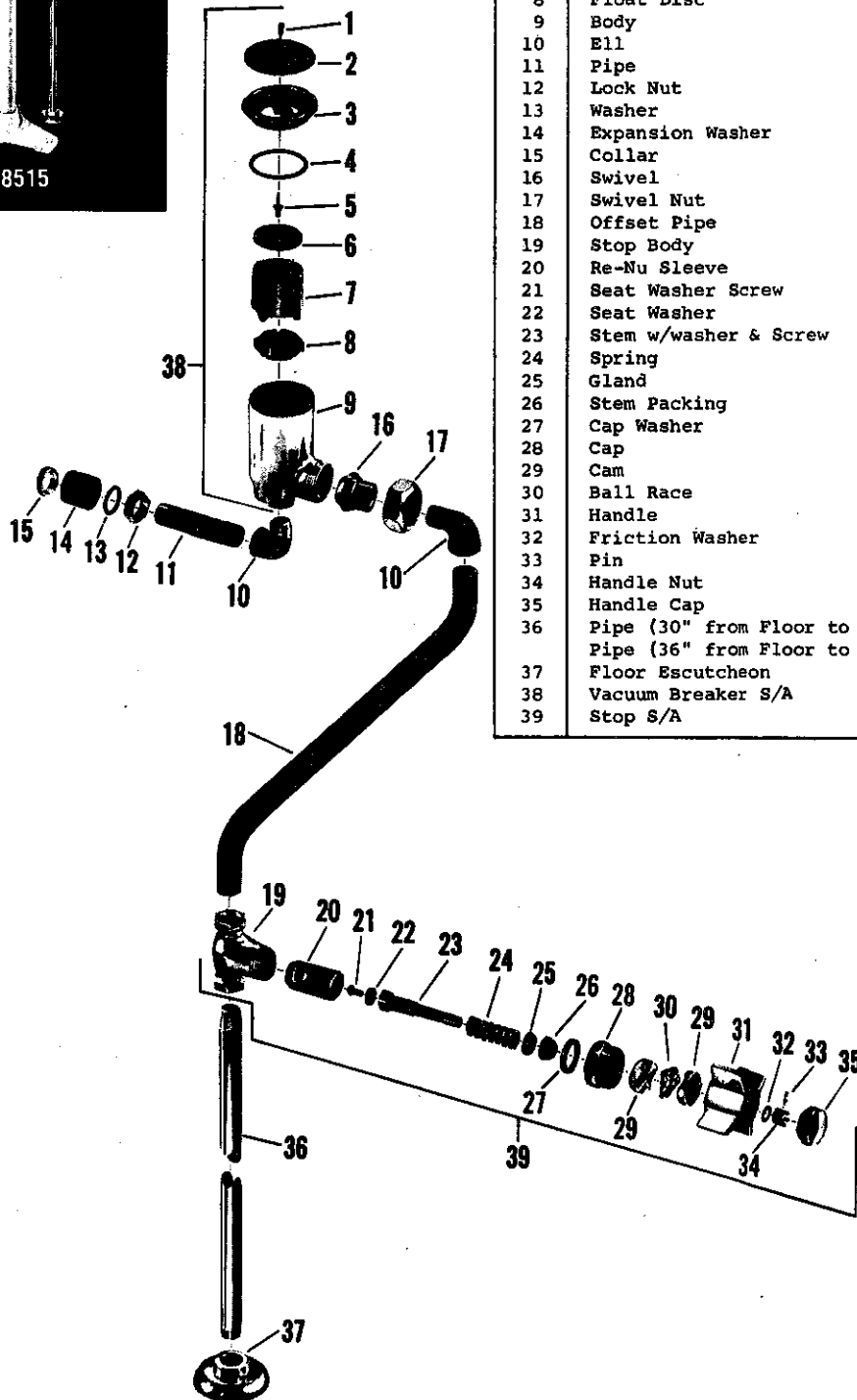
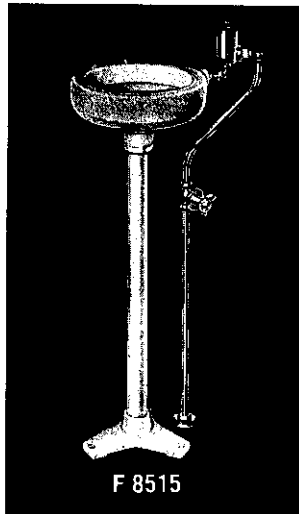
Note -

For R 6575-3

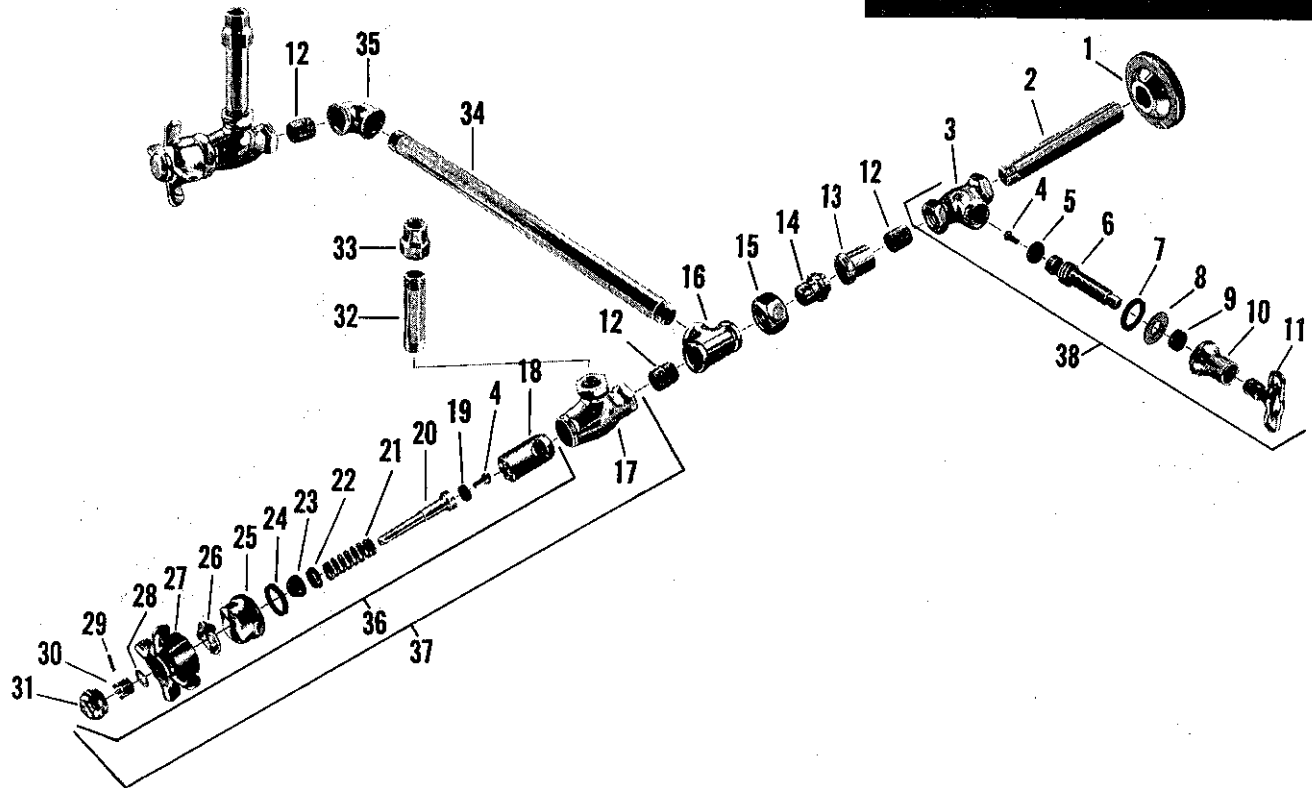
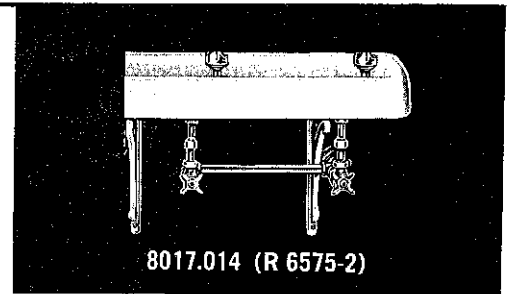
Quantities of Ref. No. 12 increases to 4
 Ref. No. 16 increases to 2
 Ref. No. 32 increases to 3
 Ref. No. 33 increases to 3
 Ref. No. 34 increases to 2
 Ref. No. 37 increases to 3

For R 6575-4

Quantities of Ref. No. 12 increases to 5
 Ref. No. 16 increases to 3
 Ref. No. 32 increases to 4
 Ref. No. 33 increases to 4
 Ref. No. 34 increases to 3
 Ref. No. 37 increases to 4



no.	description	part no.	R 6515
1	Screw	1786-01	
2	Shield	65501-02	
3	Cap	66059-02	
4	Cap Washer	86-17	
5	Guide Screw	403-17	
6	Seat Washer	85-17	
7	Float	368-17	
8	Float Disc	367-17	
9	Body	66042-02	
10	Ell	1473-02	
11	Pipe	42141-02	
12	Lock Nut	225-12	
13	Washer	220-12	
14	Expansion Washer	57-07	
15	Collar	39628-04	
16	Swivel	23976-02	
17	Swivel Nut	24186-02	
18	Offset Pipe	42118-02	
19	Stop Body	19977-02	
20	Re-Nu Sleeve	21376-08	
21	Seat Washer Screw	159-17	
22	Seat Washer	1171-27	
23	Stem w/washer & Screw	25304-08	
24	Spring	1188-07	
25	Gland	33897-08	
26	Stem Packing	129-07	
27	Cap Washer	1044-07	
28	Cap	364-12	
29	Cam	171-37	
30	Ball Race	527-17	
31	Handle	92-22	
32	Friction Washer	21771-08	
33	Pin	433-07	
34	Handle Nut	1150-07	
35	Handle Cap	1312-32	
36	Pipe (30" from Floor to Top)	42149-02	
37	Pipe (36" from Floor to Top)	43740-02	
38	Floor Escutcheon	751-12	
39	Vacuum Breaker S/A	11941-02	
	Stop S/A	7470-02	



no.	description	part no.	R 6575-2	no.	description	part no.	R 6575-2
1	Wall Escutcheon	751-16		20	Stem w/washer & Screw	63374-07	
2	Wall Pipe	42493-02		21	Spring	1188-07	
3	Stop Body	92192-02*		22	Gland	33897-07	
4	Seat Washer Screw	169-07		23	Stem Packing	129-07	
5	Seat Washer	441-07		24	Cap Washer	1044-07	
6	Stem w/washer & Screw	63371-05		25	Cap	21430-02	
7	Washer	1863-07		26	Ball Race	527-17	
8	Washer	21625-07		27	Handle	23437-02	
9	Packing	1311-07		28	Washer	21771-07	
10	Cap	21424-02		29	Pin	433-07	
11	Key	1187-07		30	Handle Nut	1150-07	
12	3/8" S.P.S. Close Nipple	41222-07		31	Handle Cap	23098-02	
13	Female Union Part	24840-02		32	Riser Pipe	41003-02	
14	Male Union Part	23968-04		33	Reducing Coupling	27673-04	
15	Union Nut	24253-02		34	Connecting Pipe	42489-02	
16	3/8" S.P.S. Tee	1478-02		35	3/8" S.P.S. 90° Ell	1466-02	
17	3/8" Re-Nu Angle Stop Body	19981-02*		36	Self-closing Unit - Specify Plain	9101-024	
18	Re-Nu Sleeve	21376-07		37	Self-closing Stop S/A	4137-02*	
19	Seat Washer	1171-27		38	Loose Key Stop S/A	2500-02*	

Note -

For 8017.022 (R 6575-3)

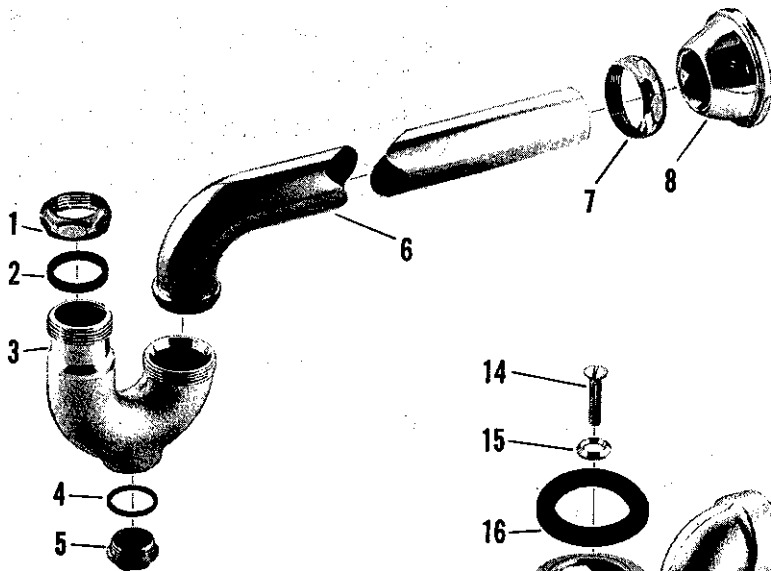
Quantities of Ref. No. 12 increases to 4
 Ref. No. 16 increases to 2
 Ref. No. 32 increases to 3
 Ref. No. 33 increases to 3
 Ref. No. 34 increases to 2
 Ref. No. 37 increases to 3

For 8017.030 (R 6575-4)

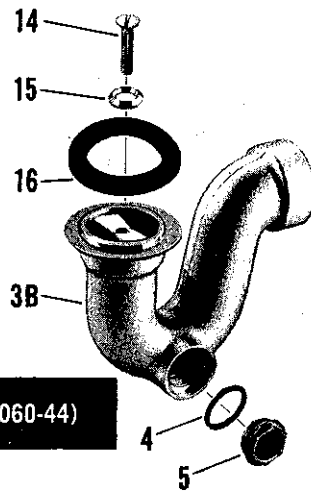
Quantities of Ref. No. 12 increases to 5
 Ref. No. 16 increases to 3
 Ref. No. 32 increases to 4
 Ref. No. 33 increases to 4
 Ref. No. 34 increases to 3
 Ref. No. 37 increases to 4

• NOT AVAILABLE

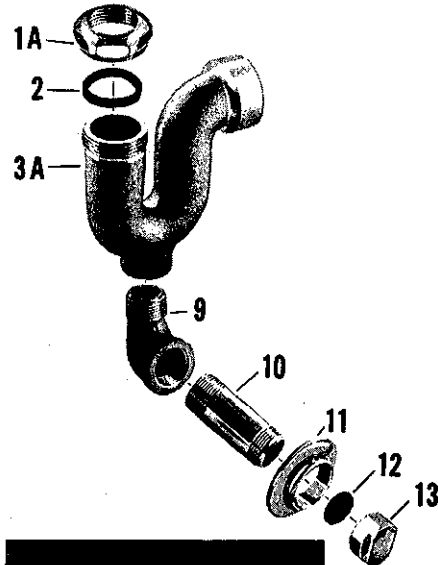




4401.048 (R 7005-44)



4460.010 (R 7060-44)



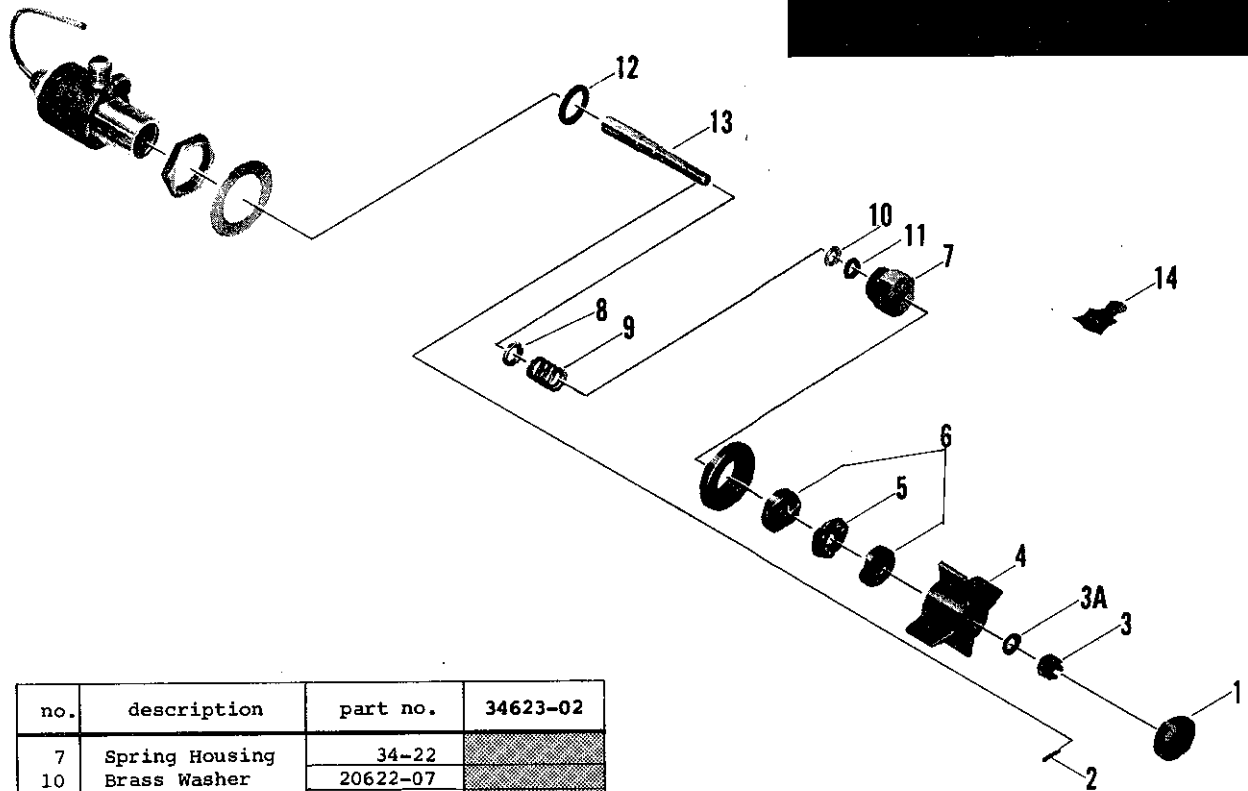
4465.019 (R 7065-44)

no.	description	part no.	R 7005-44	R 7005-45	R 7060-44	R 7060-45	R 7065-44	R 7065-45	R 7066-44	R 7066-45
1	Slip Joint Nut	634-22								
1A	Slip Joint Nut	35355-07								
2	Slip Joint Washer	468-07								
3	Body	35613-04*								
	Body	35671-04*								
3A	Body	35702-07*								
	Body	35708-07*								
3B	Body	25349-04*								
	Body	25348-04*								
4	Washer for Cleanout Plug	16-27								
5	Cleanout Plug	35760-05								
6	Tubular Outlet	8729-02								
	Tubular Outlet	8730-02								
7	Slip Joint Nut	634-22								
	Slip Joint Nut	628-12								
8	Wall Escutcheon	64845-02								
	Wall Escutcheon	64885-02								
9	Ell	1474-07								
10	Extension	25695-04								
	Extension	25696-04*								
11	Flange with Set Screw	31335-02								
12	Cap Washer	1747-07								
13	Cap	25675-02								
14	Bolt	1722-02								
15	Bolt Washer	765-32								
16	Rubber Washer	1741-07								

• NOT AVAILABLE

Repair Kit for the
following Sub-Assemblies: 7442-02
7461-02
7488-02
7493-02

34623-02



no.	description	part no.	34623-02
7	Spring Housing	34-22	
10	Brass Washer	20622-07	
11	"O" Ring	70575-07	
12	Static Seal	54212-07	
13	Stem	1711-07	
14	Parker-o-Lube	34614-07	

Note - Installation Instruction Sheet Included In Each Kit.

